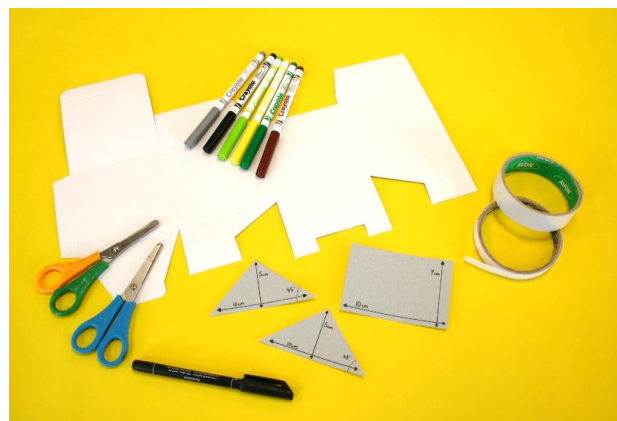


Make your own 'Mini Shed Desk Tidy' inspired by The Big Friendly Exhibition at Mansfield Library

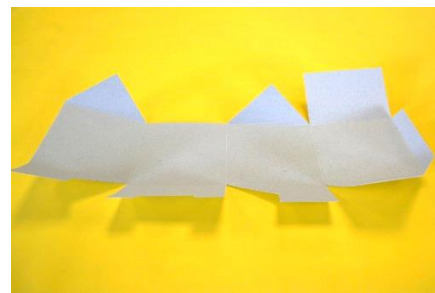
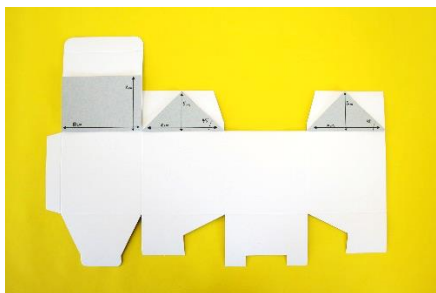


You will need:

- A cardboard box net
- Scissors
- Pen/Pencils/Felt tips
- Double sided tape/Clear tape
- Templates (optional)



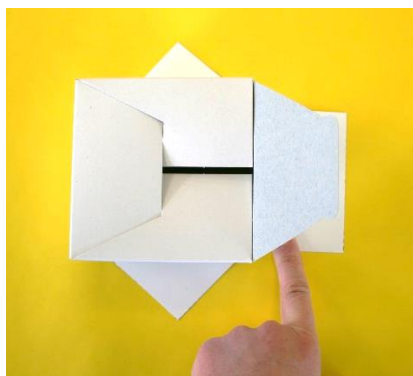
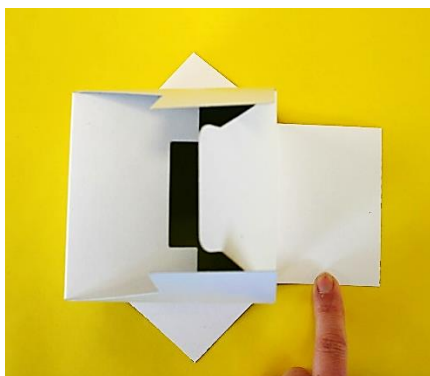
Step 1: Using the optional cardboard templates, cut the box lid so you are left with a 10 x 7cm rectangle and then cut the side tabs into triangles 10 x 5cm. Fold the box a long all of the seams.



Step 2: Stick a piece of double sided tape to the narrow tab at the edge of the box then fold around and stick in place.



Step 3: Secure the base of the box by following the three steps below.



Step 4: Make the roof of your shed by taping the sides with clear tape (sticky side out) on the inside of the box.



Step 5: Once your shed is constructed you can start to decorate! You can use felt tip pens or crayons, (we find that pens are more colourful!) Be creative, you can use the offcuts to add to your shed.



The Big Friendly Exhibition at Mansfield Library Gallery

Open on 19th July – 1st September

Nottinghamshire school children and artists have been inspired by the fantastic stories of Roald Dahl. Together they have created a Big Friendly Exhibition of amazing artwork and an 'interactive reading shed' set in a garden of wonderful woolly flowers. Discover an exhibition full of fun activities during the Summer Reading Challenge.

