



Your Books & Reading eNewsletter from Inspire

MAY 2020

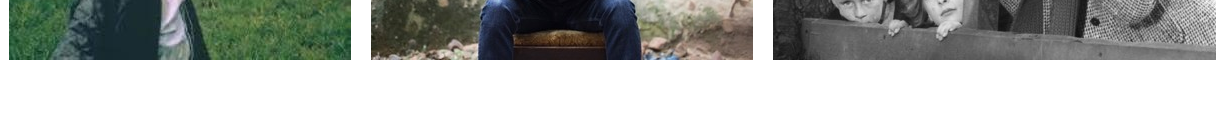
ARTICLES | INTERVIEWS | RECOMMENDATIONS | VIDEOS



## The Books That Shaped My World

Tying in with BBC Arts' celebration of the English language novel's 300th anniversary, author TM Logan and Writing East Midlands' CEO Henderson Mullin each tell us about a book that has shaped their lives.

[WATCH NOW](#)



## Kids, Kestrels and the Kitchen Sink

Andrew Graves looks at two examples of working class literature that became cinematic gold: *Kes* and *Whistle Down the Wind*. . .

[READ NOW](#)



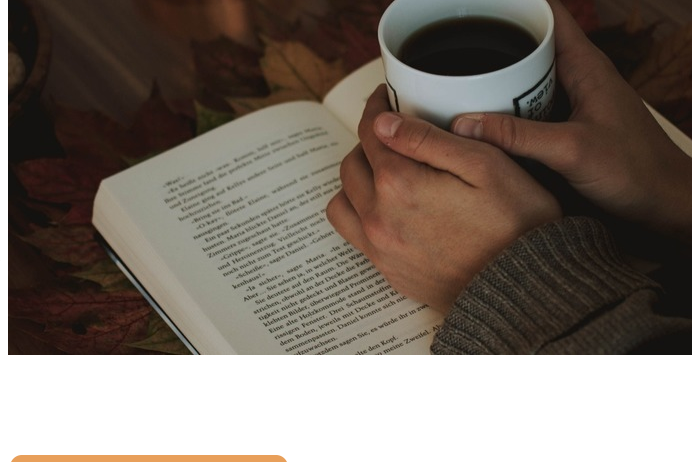
## Books Q&A

We pose our bookish Q&A to bestselling authors Milly Johnson and Cathy Bramley, and Writing East Midlands' Henderson Mullin.

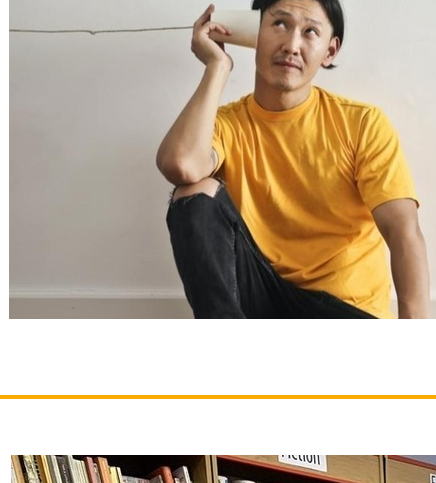
[READ NOW](#)

## Inspire Online Book Club

May sees the launch of the exciting new Inspire Online Book Club. This month, we'll be reading *The Wayward Girls* by Amanda Mason.



[READ MORE](#)



## Monthly Audio Picks

Our selection of the best audio books ready to be enjoyed now.

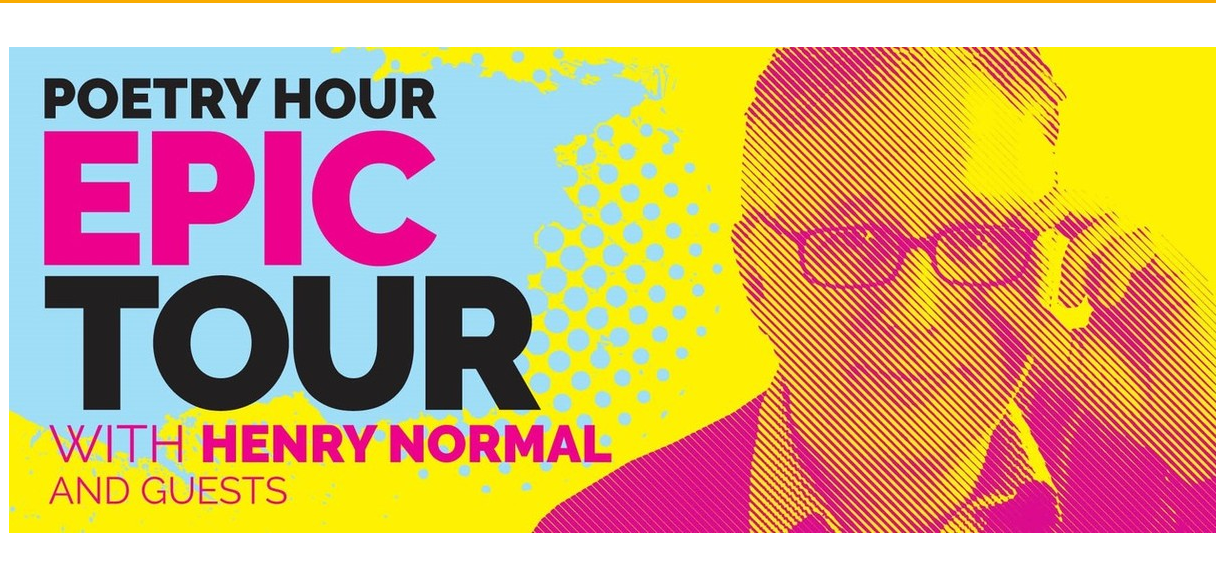
[READ MORE](#)



## Life in Lockdown: Five Leaves Bookshop

How is Nottingham's much-loved independent bookshop adapting?

[READ NOW](#)



## Epic Poetry Tour Online

Henry Normal can't tour our libraries, so he and some talented local poets are treating us to a Virtual Epic Poetry Tour!

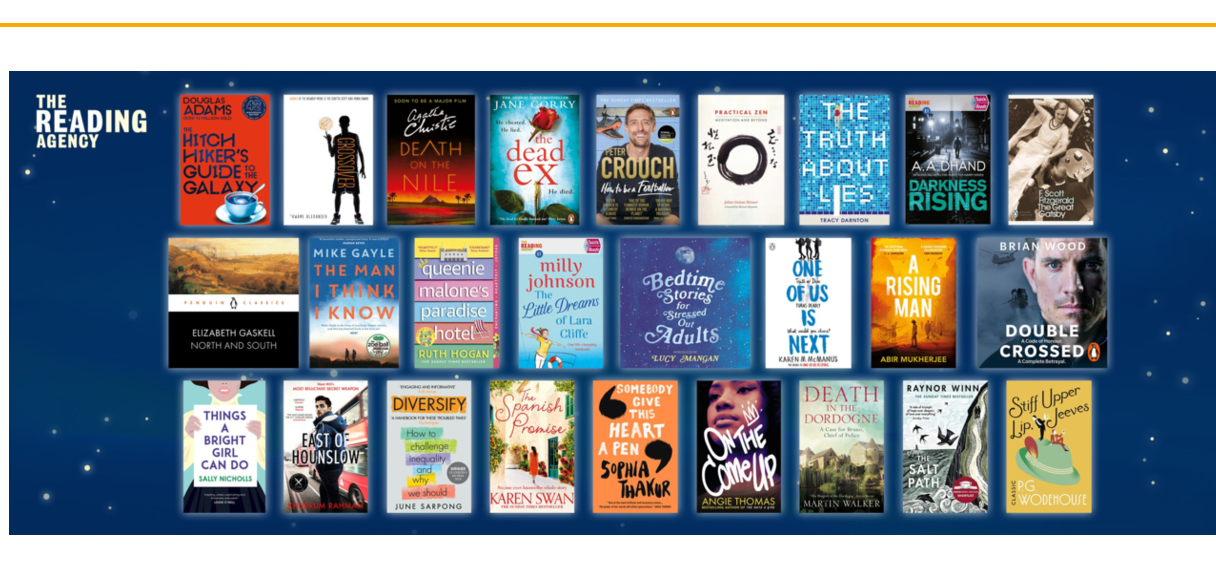
[WATCH NOW](#)



## Voices: Virtual Exhibition

Explore the virtual version of this inspiring exhibition of poetry and photographs.

[EXPLORE NOW](#)



## World Book Night Reads

Enjoy our free-to-borrow digital titles from World Book Night 2020.

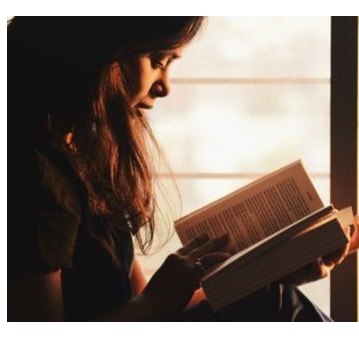
[READ MORE](#)

## Writers: Aurora Prize Now Open

The national competition run by Writing East Midlands with the Society of Authors, seeks outstanding new fiction and poetry. Deadline 8 June.



[READ MORE](#)



## Share the Reading Love

Let us know what you think of our newsletter and send us ideas for future features.

[EMAIL US](#)



[www.inspireculture.org.uk](http://www.inspireculture.org.uk) | [reading@inspireculture.org.uk](mailto:reading@inspireculture.org.uk)

Share this email:



[Manage](#) your preferences | [Opt out](#) using TrueRemove™  
Got this as a forward? [Sign up](#) to receive our future emails.  
View this email [online](#).

Inspire  
Glaisdale Parkway, Nottingham | NG8 4GP GB

This email was sent to .  
[To continue receiving our emails, add us to your address book.](#)



[Subscribe](#) to our email list.