

# INSPIRE LIBRARIES & BEYOND

DECEMBER –  
MARCH  
2024

## Fantasy Issue

YOUR GUIDE TO **WHAT'S ON**

FAMILY  
THEATRE  
**BOXED IN**

P7

EXHIBITION  
**FANTASY:  
REALMS OF  
IMAGINATION**

P4

HERITAGE  
**BEHIND  
THE DOOR**  
NOTTS  
ARCHIVES  
TOUR

P20

TAKE A  
LOOK INSIDE



Nottinghamshire  
County Council

delivered by



**Inspire**

Culture | Learning | Libraries

# DID YOU KNOW?

## WE ARE REGISTERED FOR THE FAMILY ARTS STANDARDS

This is for family events in our four largest libraries – Beeston, Mansfield Central, West Bridgford and Worksop. This means we are working hard to make families feel welcome.

We've identified events online that are Fantastic for Families with this badge.

[www.familyarts.co.uk/family-arts-standards](http://www.familyarts.co.uk/family-arts-standards)



**Fantastic  
For Families**

## WE ARE ONE OF ARTS COUNCIL ENGLAND'S NATIONAL PORTFOLIO ORGANISATIONS

It's our delight to present a funded programme of work for all.

Visit: [inspireculture.org.uk/npo](http://inspireculture.org.uk/npo) for full details.



Supported using public funding by

**ARTS COUNCIL  
ENGLAND**

## WE ARE REGISTERED AS AN ARTS AWARD SUPPORTER

Offering a wide cultural programme across our venues. Many of our events are free or incur a very small charge and many can be accessed by young people looking for opportunities locally to help them achieve an Arts Award.



# HELP & ADVICE

## BOOKING EVENTS

**Tickets for events can be booked online, in person at the library, or by phone.**

Tickets are non-refundable unless an event is cancelled. Programme is subject to change and all details are correct at time of print.

## CONTACT INSPIRE

Phone: **01623 677 200**

Email: [ask@inspireculture.org.uk](mailto:ask@inspireculture.org.uk)  
[inspireculture.org.uk](http://inspireculture.org.uk)

## KEEP UP TO DATE

Follow us on social media and keep up to date with all our latest news and events.



@NottsLibraries



@NottsLibraries



@InspireCultureNotts

You can also sign up to receive our newsletters direct to your email inbox – select from a range of preferences based on your own interests at: [inspireculture.org.uk/emails](http://inspireculture.org.uk/emails)

## ACCESS

Please visit: [inspireculture.org.uk/access](http://inspireculture.org.uk/access) to find out more about access and facilities at your local library.

# ACCESSIBLE FORMATS

**This brochure is available in large format, or text-only.**

Visit our website  
[inspireculture.org.uk/whatson](http://inspireculture.org.uk/whatson)  
to read online, or a copy can be made available at your local library upon request.

# ARTS & CULTURE LIVE AT YOUR LIBRARY & BEYOND

We're finishing a fantastic 2023 and starting 2024 strong with a packed season of heritage, reading, theatre, live music, arts, exhibitions, film, learning and events for children and families!

## YOU'LL NOTICE A FANTASY THEME THROUGHOUT OUR NEW SEASON OF EVENTS.

Thanks to our membership of the Living Knowledge Network, we're able to host a taster of the **Fantasy exhibition** currently on display at The British Library in London, and many of our events have been inspired by this theme. Children can head **Into Goblyn Wood** with fantasy author **Anna Kemp** or follow breadcrumbs to the **Hansel and Gretel** family theatre performance presented by Nottingham Playhouse. Adults can go **behind the door** of Nottinghamshire Archives to uncover the strange beasts that lurk among the records, or even try their luck at escaping using clues of the past!

Grab your popcorn and enjoy a film screening of **Stardust**, or if horror is more your thing join film producer Clelia McElroy to explore **Monstrous Flesh: Women's Bodies in Horror**. Plus, our usual programme of dementia friendly film screenings continue. Get into the festive spirit on board the **Polar Express** or join Woody and the gang in **Toy Story 4**.

Speaking of Christmas, there's still time to book your tickets for the annual **An Inspired Christmas Concert**. If you're missing the summer heat, we'll be holding our own festival at our Fantastic Festivals family concerts. Adults can enjoy live music as **Jazz Steps Live at the Libraries** returns to Beeston, Worksop, and West Bridgford Libraries.

Reading is at the heart of what we do, and I'm proud of the range of authors visiting us this season including bestselling crime author **T.M. Logan** and fantasy author **M.A. Kuzniar**. Plus, we're launching a new project called **I Am A Writer** to give adults who may not recognise themselves as creative the chance to work with professional writers to co-create exciting new work.

We couldn't have a more appropriate family theatre performance visiting us in March! **Luna Loves Library Day – The Musical** explores the magic among the shelves this March, and in February we welcome **Boxed In**, a family theatre performance for everyone who has ever been made to feel naughty because the rules don't make sense.

We're delighted that the **Little Creatives Book** packed with 25 fun activities for under 5s is now available to borrow from all Inspire Libraries! There are details of the new **Little Creatives Workshops** starting in March on page 9 of this brochure.

We love sharing the heritage of our county. Our heritage talks this season will introduce you to the history of our railway lines, uncover the forgotten bustling town of **Segelocum**, and delve into the story of love, duty, and sacrifice of **John Chaworth Musters**.

We're ready to give you a warm welcome. Whether it's to try out one of the exciting events from this brochure, to read, learn and enjoy culture, to use IT facilities or connect with your local community, we'd love to see you soon.

**Peter Gaw** Chief Executive, Inspire

Booking Info:



Booking required



Advised booking



No booking needed

Living  
Knowledge  
Network

# Fantasy

## Realms of imagination

LIBRARY  
HSL1118

### Set out on a legendary quest through the impossible worlds of fantasy.

From epic visions to intricately envisaged details, we celebrate some of the finest fantasy creators, reveal how their imagined lands, languages and creatures came into being, and delve into the traditions of a genre that has created some of the most passionate and enduring fandoms.

Journey from fairy tales and folklore to discover how the oldest forms of literature continue to inspire fantasy authors, filmmakers, and game producers today.

Gather your fellow adventurers and step through your library's portal into the realms of fantasy as it has never been chronicled before.

Exhibition

**FANTASY: REALMS OF IMAGINATION**

**FREE** Various Inspire venues <sup>(N)</sup>

**Nottinghamshire Archives**

Friday 27 October – Wednesday 20 December

**Workshop Library**

Saturday 6 January – Sunday 28 January

**Kirkby-in-Ashfield Library**

Thursday 1 February – Saturday 24 February

Inspire are delighted that as part of the Living Knowledge Network we are hosting a taster of the full exhibition currently on show at the British Library in London.

[inspireculture.org.uk/LKN](http://inspireculture.org.uk/LKN)

**Fantasy  
Event**

Look out for this flag  
for more fantasy  
themed events





IMAGINATION  
GAMING

### Workshop

## IMAGINATION GAMING

**FREE** Inspire Libraries <sup>(N)</sup>

### Workshop Library

10am – 2pm / Saturday 20 January

### Kirkby-in-Ashfield Library

10am – 2pm / Thursday 15 February

Join Imagination Gaming for oodles of fun at one of our family drop-in sessions. Play some of the coolest, smartest, fast witted and amusing board games from around the world, that are easy to pick up but hard to put down!

For ages 5 – 11 and their grown-ups

[inspireculture.org.uk/imaginationgaming](http://inspireculture.org.uk/imaginationgaming)



### Children's Author Event

## INTO GOBLYN WOOD WITH ANNA KEMP

**£3** children / **FREE**  
accompanying adults

Inspire Libraries <sup>(A)</sup>

### Mansfield Central Library

10.30am / Saturday 3 February

### Workshop Library

2pm / Saturday 3 February

Join author Anna Kemp for a lively fantasy writing workshop inspired by her brilliant series *Into Gobyln Wood*.

Find out about being an author and the role of magic in fantasy themed books.

You'll invent characters and create a unique magic system, building a fantasy world of your own.

**Suitable for children aged 7 – 11**

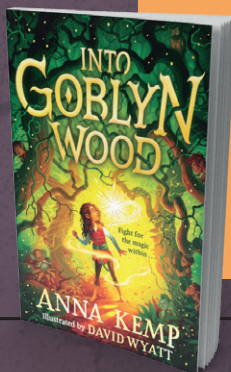
### ABOUT THE AUTHOR

Anna Kemp is the author of the *Into Gobyln Wood* series as well as picture books like the bestselling *Dogs Don't Do Ballet*, *The Worst Princess* and *Dave, The Lonely Monster*.



Anna Kemp

Where  
will your  
journey  
lead?



### Family Theatre

## NOTTINGHAM PLAYHOUSE PRESENTS: HANSEL AND GRETEL

**£4** library members /

**£7** non-library members

Workshop Library <sup>(A)</sup>

11am / Saturday 27 January

Hansel and Gretel are lost in the enchanted forest with no breadcrumbs to follow home. Cold and tired, they stumble upon a cosy cottage made from delicious gingerbread and are invited inside... But this hideaway in the woods may not be as sweet as it seems.

Join Hansel and Gretel as they meet creatures from the forest, get into scrapes, meet a witch and find their way back home – they may even need your help along the way!

Full to the brim with music, magic and plenty of opportunities to join in, this fairy tale adventure is a perfect treat for little ones and their grown-ups.

For children aged 3 – 8 and their families

[inspireculture.org.uk/hanselandgretel](http://inspireculture.org.uk/hanselandgretel)

## NOTTINGHAM PLAYHOUSE





### Children's Author Event

#### AWESOME NATURE CRAFTS AND GAMES WITH BECKY GODDARD-HILL AND CATHERINE HUGHES

£3 children / **FREE**  
accompanying adults

Inspire Libraries <sup>(A)</sup>

**Beeston Library**

**10.30am / Saturday 9 December**

**West Bridgford Library**

**2pm / Saturday 9 December**

In this hands-on workshop, you'll play nature games, have a go at creating awesome nature crafts, and work on a nature activity to take home and enjoy with the family. By the end of the session, you'll be fired up and full of ideas for exciting outdoor play!

Becky Goddard-Hill and Catherine Hughes are the authors of *A Year of Nature Walks and Games*, designed to help children get active and have fun playing outdoors.

**Suitable for children aged 5+ and their grown-ups**



Catherine & Becky



### Family Workshops

#### NOTTINGHAM FESTIVAL OF SCIENCE AND CURIOSITY

**FREE** at selected Inspire Libraries  
and across Nottinghamshire

**5 – 16 February 2024**

A jam-packed programme of free, hands-on activities to inspire your family's curiosity.

Nottingham Festival of Science and Curiosity celebrates science, technology, engineering and maths with interactive, fun and free events across Nottinghamshire. Inspire Libraries are delighted to be hosting a number of events as part of the 2024 programme during February half-term.

Keep updated at  
[inspireculture.org.uk/fosac](https://inspireculture.org.uk/fosac)

Produced by Ignite!

The full  
festival programme  
will be available at  
[www.nottsfosac.co.uk](https://www.nottsfosac.co.uk)  
with workshops open to  
book from Monday  
15 January.

ignite!





## Family Theatre

### **BOXED IN** **A DARYL & CO. AND** **HALF MOON CO-PRODUCTION**

£4 library members /

£7 non-library members

Inspire Libraries <sup>(A)</sup>

**Workshop Library**

10.30am / Wednesday 14 February

**Retford Library**

3.30pm / Wednesday 14 February

**Beeston Library**

10.30am / Thursday 15 February

**West Bridgford Library**

3.30pm / Thursday 15 February

**Mansfield Central Library**

11am & 2pm / Friday 16 February

**WHO SAYS A LINE SHOULD ALWAYS  
BE STRAIGHT? WHAT'S WRONG WITH  
ZIG ZAGS? OR HOW ABOUT CURVES?**

Boxed In follows the journey of someone who can't make head nor tail of the unspoken rules that surround us all. Sometimes stop means go and go means stop. Are you supposed to go this way, or that? Sometimes it's up and sometimes it's down.

In a world where everyone else seems to understand, it can all get a bit confusing. And when you get it wrong, you're made to sit out, but you don't understand why. It seems so unfair.

This heartfelt story is about being made to feel naughty, just because the rules don't make sense.

For children aged 3 – 6 and their families

[inspireculture.org.uk/boxedin](http://inspireculture.org.uk/boxedin)

Programmed in association  
with The Spark Arts for Children.

## Under 5s Workshops

### **MAGICAL MISSIONS!** **WITH NOTTINGHAM** **PLAYHOUSE**

£2 Inspire Libraries <sup>(A)</sup>

**Bingham Library**

10.30am / Monday 26 February

**West Bridgford Library**

2pm / Monday 26 February

**Southwell Library**

2pm / Tuesday 27 February

**Kirkby-in-Ashfield Library**

10.30am / Wednesday 28 February

**Sutton-in-Ashfield Library**

2pm / Wednesday 28 February

**Workshop Library**

10.30am / Thursday 29 February

**Retford Library**

2pm / Thursday 29 February

**Hucknall Library**

10.30am / Friday 1 March

**Mansfield Central Library**

2pm / Friday 1 March

**Arnold Library**

10.30am / Saturday 2 March

**Beeston Library**

2pm / Saturday 2 March

Join Marian on a magical mission which takes us far away from Sherwood Forest, with guidance along the way from the Magical Major Oak.

Children and adults alike will love this unique chance to physically explore stories, characters and landscapes led by the theatre making team from Nottingham Playhouse.

These workshop sessions will unleash your child's imagination and stimulate the senses by using music, movement, puppetry, crafting and sensory play.

For children aged 2 – 4 and their grown-ups

[inspireculture.org.uk/MagicalMissions](http://inspireculture.org.uk/MagicalMissions)

**NOTTINGHAM**  
**PLAYHOUSE**

**PLAYFUL +  
INTERACTIVE  
PRACTICAL  
SESSION**

## Family Concert

**FANTASTIC FESTIVALS**

£4 library members /

£7 non-library members

Inspire Libraries **Beeston Library****1pm / Saturday 24 February****Southwell Library****3.30pm / Saturday 9 March****West Bridgford Library****12pm / Sunday 24 March**

Take front row seats as we explore some well-known festivals (and great music!) and give you and your families a trip to remember. Relive those summer vibes in the warmth and comfort of your library with tunes such as Coldplay's *Yellow* and Take That's *Shine*.

Our concert series aims to introduce children to the music we all love and explain the story as we go. Grab a hat and sit back and enjoy.

After the performance meet the musicians and try out some of the instruments for yourself.

For children aged 5 – 11

[inspireculture.org.uk/family-concerts](http://inspireculture.org.uk/family-concerts)

## Family Theatre

**LITTLE SEEDS MUSIC AND Z-ARTS PRESENT: LUNA LOVES LIBRARY DAY – THE MUSICAL**

£4 library members /

£7 non-library members

Inspire Libraries **Beeston Library****11am & 2pm / Saturday 9 March****West Bridgford Library****11.30am & 1.30pm / Sunday 10 March**

Join Luna and her Dad for an adventure among the library shelves in this exciting new musical for families.

Luna looks forward to one special day... Library Day! It's the day when she discovers magic among the library shelves but is also a chance to spend time with Dad, making it all the more special.

Based on the critically acclaimed book by Waterstones Children's Laureate Joseph Coelho and illustrator Fiona Lumbers, *Luna Loves Library Day* is the perfect treat for children and families.

For children aged 5+ and their families

Luna Loves Library Day is a co-production from Little Seeds Music and Z-arts.

[inspireculture.org.uk/luna](http://inspireculture.org.uk/luna)

Programmed in association with The Spark Arts for Children.



JOIN US FOR  
A FUN VISIT TO  
OUR FESTIVAL  
OF TUNES



Illustration by Fiona Lumbers

Booking Info:  Booking required Advised booking No booking needed

Under 5s

**LITTLE CREATIVES****FREE** at 11 Inspire Libraries **Beeston Library** 1 & 8 March**West Bridgford Library** 2 & 9 March**Arnold Library** 4 & 11 March**Mansfield Central Library** 6 & 13 March**Workshop Library** 7, 14 & 21 March**Bingham Library** 7 & 14 March**Retford Library** 9 & 16 March**Kirkby-in-Ashfield Library** 16 & 23 March**Southwell Library** 19 & 26 March**Hucknall Library** 20 & 27 March**Sutton-in-Ashfield Library** 21 & 28 March**CALLING  
ALL TINY  
ARTISTS!****JOIN US FOR CREATIVE ART  
SESSIONS DESIGNED BY ARTISTS  
FOR VERY YOUNG CHILDREN.**

Share in their active, playful and messy fun and see their confidence grow as they explore fascinating materials and stimulating creative activities.

There's two sessions available to book:

**Either** 10am – 10.45am**or** 11.15am – 12pm

For children aged 2 – 5

All children must be accompanied.

For full dates & times of sessions, visit:  
[inspireculture.org.uk/littlecreatives](http://inspireculture.org.uk/littlecreatives)

Under 5s

**THE LULLABY BANK****FREE** Inspire Libraries **Beeston Library**

10.30am / Thursdays starting 11 January

**Bingham Library**

10.30am / Tuesdays starting 9 January

**West Bridgford Library**

1.30pm / Wednesdays starting 10 January



The Lullaby Bank is a chance for mums and babies to relax and bond in a calm space. Sing and listen to melodies from around the world to soothe and uplift.

We will sing a variety of lullabies from around the globe, in English and other languages, learn some baby-massage and basic signing, as well as some play time rhymes and songs in a quiet and relaxing space. The class also offers a breast-feeding safe space, and a chance to connect with other new mums in what can often be a very isolating and exhausting time.

**Babies aged 0 – 9 months**

A partnership between  
Inspire Music and  
Music for Everyone.

**FREE**  
10 weeks  
session

Under 5s

**ADVENTURES IN MUSIC****FREE** at 12 Inspire Libraries **Starting from 8 January**

Adventures in Music uses rhythm, music and movement to develop your child's language skills, spark their imagination and build their confidence in exploring and making music.

From pirates to fairies, a mermaid city to a monster mountain - there are 10 sessions in total with a different enchanting theme each week, so you and your little one can clap, stamp, shake, dance and sing!

**Suitable for children aged 2 – 5**

Children must be supervised throughout the sessions.

**Libraries include:** Arnold, Beeston, Bingham, Hucknall, Kirkby-in-Ashfield, Mansfield Central, Newark, Retford, Southwell, Sutton-in-Ashfield, West Bridgford, and Workshop. Start dates for each library will vary.

For full dates & times visit  
[inspireculture.org.uk/adventures](http://inspireculture.org.uk/adventures)

# I AM A READER

CELEBRATING  
THE CREATIVITY  
OF READING

Mahsuda Snaith

## Author Event

### WHAT HAPPENS WHEN WE READ? WITH MAHSUDA SNAITH

£3 Arnold Library 

10am / Wednesday 31 January

Enjoy a mid-morning treat of fun and insightful book chat with award-winning author and I Am A Reader writer Mahsuda Snaith, who'll be posing the big question – what happens when we read?

This event is part of Inspire's exciting **I Am A Reader** initiative – which explores and celebrates the creativity of reading.

I Am A Reader is supported using public funding by the National Lottery through Arts Council England. Find out more at [iamareader.org.uk](http://iamareader.org.uk)

## Author Event

### K.L. SLATER

£3 Hucknall Library 

3pm / Tuesday 6 February

Join K.L. Slater, bestselling author of psychological crime thrillers, as she talks about her books, career and writing process. Kim has sold more than 2 million copies of her books, all of which are set in Nottinghamshire.

#### ABOUT THE AUTHOR

Kim is the number one bestselling author of 21 psychological crime thrillers. She has also written four Carnegie-nominated Young Adult novels as Kim Slater. Kim has an MA in Creative Writing from Nottingham Trent University and became a published author at the age of 48. She lives with her husband in a small Nottinghamshire village.

K.L. Slater

# Fantasy-Event

M.A. Kuzniar

## Author Event

### IN CONVERSATION WITH M.A. KUZNIAR

£5 Beeston Library 

7.30pm / Thursday 8 February

Join bestselling author M.A. Kuzniar for an exploration of her brilliant work in the genre of fantasy.

#### ABOUT THE AUTHOR

M.A. Kuzniar writes fantastical literary fairy tales for adults as well as her wonderful children's books. Her debut adult novel *Midnight in Everwood* proved an instant classic, putting a dark, gothic twist on a much-loved tale.

## Author Event

### CAROLINE ENGLAND

£3 Kirkby-in-Ashfield Library 

2pm / Tuesday 20 February

Join Caroline England the 'Duchess of dark domestic noir' as she talks and answers your questions about the road to the publication of her six psychological thrillers as Caroline England and four gothic-tinged suspense novels as C.E. Rose, as well as all things writerly.

#### ABOUT THE AUTHOR

Caroline's debut psychological thriller, *Beneath the Skin*, was published in 2017, and she has since written the top ten eBook bestseller *My Husband's Lies, Betray Her*, *Truth Games* and *The Sinner*. Her latest dark domestic suspense, *The Stranger Beside Me*, was published in August 2023.

Caroline England

# Author Event

**T.M. LOGAN**

£3 Beeston Library <sup>A</sup>

7.30pm / Tuesday 19 March

Join bestselling author T.M. Logan for a fantastic evening as he talks about his books and career so far.

## ABOUT THE AUTHOR

T.M. Logan was a national newspaper journalist before turning to novel-writing full time. His thrillers have sold more than one million copies in the UK and are published in translation in 22 countries around the world.

Tim's latest novel, *The Mother*, is a twisty tale of deceit and betrayal, of redemption and revenge - the story of a woman wrongfully convicted of the very worst crime and her fight for justice. His previous thriller, *The Curfew*, was also a Sunday Times bestseller.

*The Holiday* was a Richard & Judy Book Club pick and spent ten weeks in the Sunday Times paperback Top 10. It has since been made into a four-part TV drama starring Jill Halfpenny. His novel *The Catch* was also adapted for TV starring BAFTA-winner Jason Watkins and is now on Netflix.



T.M. Logan



Sarah Ward

# Author Event

**SARAH WARD**

£3 Workop Library <sup>A</sup>

2pm / Wednesday 13 March

Join crime and gothic thriller writer Sarah Ward A.K.A. Rhiannon Ward for a discussion about her books, her passion for crime writing, and lots more.

## ABOUT THE AUTHOR

Sarah Ward is the author of four critically acclaimed crime novels featuring DC Connie Childs, set in the evocative Derbyshire Peak District. As Rhiannon Ward, she has also written *The Shadowing*, which is set in Southwell and its workhouse. Her latest series is the Mallory Dawson Welsh-based crime thriller series.

# Author Event

**FRANCES BRODY**

£3 Mansfield Central Library <sup>A</sup>

2pm / Tuesday 19 March

Join Frances as she talks about her writing career including her latest book *Six Motives for Murder* - the second in the Nell Lewis Prison Governor series due out on 28 March 2024.

## ABOUT THE AUTHOR

Frances is the author of 13 Kate Shackleton Murder Mysteries set in 1920s and 1930s Yorkshire as well as her three historical novels, *Sisters on Bread Street*, *Sixpence in Her Shoe*, and *Sisters of Fortune*. Frances has also written *A Murder Inside*, set in HMP Brckerley, an open prison for women and featuring Nell Lewis, Prison Governor.

Frances began her writing life in radio and has written for theatre and television. She enjoyed her time in Nottingham working with the Nottingham Youth Theatre and Nottingham Playhouse Roundabout Company.



Frances Brody



# Author Event

**TOM MEAD**

£3 Bingham Library <sup>A</sup>

2pm / Wednesday 27 March

Join Tom Mead, author of the acclaimed internationally bestselling mysteries *Death and the Conjuror* and *The Murder Wheel*, for a scintillating discussion of his novels and all things golden age of crime writing.

Tom will discuss not only his books, which pay delightful homage to his favourite authors from the golden age, but his long-held fascination with crime detection writing from the evocative period between the world wars.



# INSPIRE ONLINE BOOK CLUB

## Did you know that Inspire has a monthly online book club?

At the beginning of every month, the club votes for the next book to read from a great selection. This will be available to borrow for free as both an eBook or eAudiobook.

Then simply enjoy reading along with our growing community of Inspire Online Book Clubbers. You can also take part in online chats and share your feedback and thoughts on our social media pages.



Find out more at:  
[inspireculture.org.uk/bookclub](https://inspireculture.org.uk/bookclub) or get  
in touch at [reading@inspireculture.org.uk](mailto:reading@inspireculture.org.uk)



### Talk

## SHERWOOD FOREST UP CLOSE – STORIES BEHIND THE LENS

£3 West Bridgford Library <sup>N</sup>

1.30pm / Sunday 3 December

Join us for an unforgettable presentation by local wildlife photographer Alex Hyde. Alex captures insects just a few millimetres in size, unveiling an extraordinary world full of diverse and often unseen wildlife!

As well as a formal presentation, there will be an opportunity to ask questions about the photographic techniques Alex uses and a discussion about what we can do to help insect biodiversity.

COME AND DISCOVER  
FASCINATING FACTS  
ABOUT INSECT LIFE  
AND HEAR ALEX  
DESCRIBE TIPS  
AND TRICKS FOR  
PHOTOGRAPHING  
INSECTS YOURSELF.



This event joins the **Sherwood Forest Up Close** exhibition running from Tuesday 28 November - Wednesday 20 December 2023 at West Bridgford Library.

The work is commissioned by the Miner2Major Landscape Partnership scheme, supported by National Lottery Heritage Fund.



**Miner2Major**  
The Real Sherwood Forest

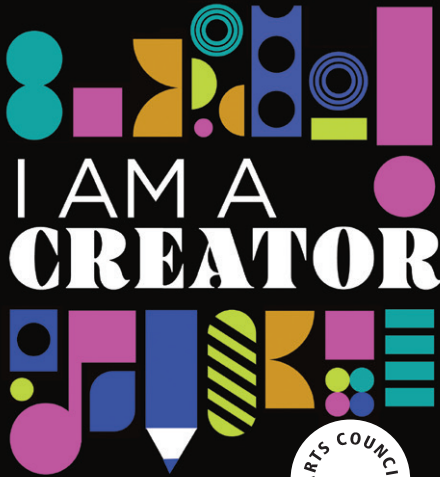
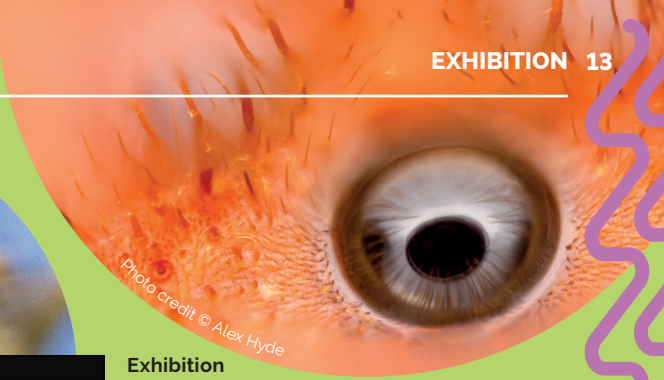


Made possible with  
**Heritage  
Fund**

Photo credit © Alex Hyde



Photo credit © Alex Hyde

**Exhibition****I AM A CREATOR****FREE** Mansfield Central Library <sup>(N)</sup>**Tuesday 5 March – Tuesday 16 April**

Discover I Am A Creator – Inspire's exciting new programme of creative opportunities for people of all ages. Inspired by some of the fascinating insights we uncovered as part of our ground-breaking, Arts Council England funded, I Am A Reader project, I Am A Creator aims to bring audiences - who may not always recognise themselves as creative - together with professional writers and artists as they co-create exciting new work across a range of mediums. This exhibition provides an inspiring preface to the programme, which begins its first year with I Am A Writer.

Find out more about the inspiring team of writers who will be working with our audiences, delve into the background of the programme and discover our aims.

Find out more at: [inspireculture.org.uk/iamacreator](http://inspireculture.org.uk/iamacreator)

**Exhibition****SHERWOOD FOREST UP CLOSE****FREE** West Bridgford Library <sup>(N)</sup>**Tuesday 28 November – Wednesday 20 December**

An exhibition of images by natural history photographer Alex Hyde showcasing some of the special species of Sherwood Forest close up and in fascinating detail.

The work is commissioned by the Miner2Major Landscape Partnership scheme, supported by National Lottery Heritage Fund.



**Miner2Major**  
The Real Sherwood Forest



Made possible with

**Heritage Fund**

**Exhibition****INSPIRE COMMUNITY OPEN****FREE** Beeston Library <sup>(N)</sup>**Wednesday 1 November – Wednesday 20 December**

Come and see the wonderful creative talents of Nottinghamshire artists in our Inspire Community Open Exhibition.

Every year we are delighted by the artwork on show inspiring visitors to take up a new creative pathway for themselves. The show is an amazing mixture of painting, drawings, photography and making.

**INSPIRE  
COMMUNITY  
OPEN  
EXHIBITION**

Photo credit © Neil Pledger

No booking needed  
<sup>(N)</sup>

Advised booking  
<sup>(A)</sup>

Booking required  
<sup>(B)</sup>

Booking Info:



THE 2023<sup>®</sup>  
**BIG DRAW  
FESTIVAL**

# Drawing with Senses

Exhibition

**THE BIG DRAW 2023:  
TIME TO CONNECT**

**FREE** Inspire Libraries 

**Workshop Library**

**Saturday 4 November – Thursday 21 Dec.**

**West Bridgford Library**

**Thursday 4 January – Wednesday 14 Feb.**

**Beeston Library**

**Saturday 17 February – Saturday 30 March**

We've joined forces with the Miner2Major Landscape Partnership Scheme to help leave a legacy of artworks in 6 key locations across Sherwood Forest.

Visual artists **Mandy Keating** and **Tracey Meek** have worked with different groups across Nottinghamshire to create drawings that will inform sculptor **Chris Campbell**, who will make the legacy artworks.

**THE BIG DRAW 2023: TIME TO CONNECT  
EXHIBITION SHOWS THE STORY OF THE PROJECT.**

This work is part of a wider national project working with renowned portrait photographer, Alistair Morrison. Morrison has created Time to Connect, photographing people and places around the UK, and Nottinghamshire is the starting point for this journey!

[inspireculture.org.uk/thebigdraw](http://inspireculture.org.uk/thebigdraw)



**Miner2Major**  
The Real Sherwood Forest



Made possible with  
**Heritage  
Fund**



Artist: Fiona MacDonald  
Photo credit: © Neil Pledger

## OPEN STUDIOS NOTTS 2024



### Would you like to exhibit your artwork in an exhibition?

Open Studios Notts is making its annual call out to Nottinghamshire artists and makers who would like to open their studios to the public and be part of OSNotts 2024.

#### OSNotts includes:

- Open Studio events of participating artists and makers
- A printed and widely circulated brochure of all the events
- Year long studio and profile entry on the OSNotts website for each participating artist
- A chance to be selected for one of Inspire Library exhibitions in either West Bridgford, Worksop or Southwell libraries.

#### Get your work photographed

Each fee-paying artist participating in OSNotts will be eligible for selection by Inspire to have professional photos taken in their studio to be featured in the library exhibitions and for each artist's own use.

The deadline for applications is 5pm, Friday 26 January 2024.

**FIND  
OUT MORE**  
[osnotts.co.uk](http://osnotts.co.uk)



# JAZZ STEPS

## live at the libraries

### Live Music

#### TONY KOFI'S TENOR LEGACY

£13 Inspire Libraries <sup>(B)</sup>

**Beeston Library**

7.30pm / Monday 11 December

**Workshop Library**

7.30pm / Tuesday 12 December

**West Bridgford Library**

7.30pm / Wednesday 13 December

Internationally acclaimed, Nottingham-born saxophonist Tony Kofi pays homage to jazz giants of the tenor saxophone including Dexter Gordon, Sonny Rollins, John Coltrane and Wayne Shorter. Evocative renditions of classic tunes from the legendary Blue Note label, with Tony's take on their historical context. This vibrant quartet, active since 2015, have terrific musical mastery and empathy.

### Live Music

#### MUCH ADO ABOUT JAZZ

£13 Inspire Libraries <sup>(B)</sup>

**Beeston Library**

7.30pm / Monday 19 February

**Workshop Library**

7.30pm / Tuesday 20 February

**West Bridgford Library**

7.30pm / Wednesday 21 February

Hugely entertaining and talented musicians, Chris Gumbley (saxophone and clarinet) and Al Gurr (piano), perform much-loved jazz classics and jazz interpretations of songs from shows, pop and theme tunes. Expect great melodies and dry humour, as they also "open up" on how jazz musicians work.

**Please note:** Dave McGarry replaces Al Gurr on piano at West Bridgford.

### Live Music

#### QUARTET CON ALMA

£13 Inspire Libraries <sup>(B)</sup>

**Beeston Library**

7.30pm / Monday 18 March

**Workshop Library**

7.30pm / Tuesday 19 March

**West Bridgford Library**

7.30pm / Wednesday 20 March

Quartet Con Alma perform a captivating mix of Latin jazz, from the hip sound of Cubop – the Cuban and Puerto Rican influences on jazz in 1950s New York – through to Samba and Bossa Nova. This music from the Latin Quarter is always performed Con Alma... "with soul".

"PASSIONATE.  
SUPERB.  
HEARTFELT."

The Guardian  
on Tony Kofi

Quartet Con Alma: Paul Deats (piano), Simon Paterson (bass),  
Rich Kensington (percussion), Simon Bowhill (drums)

JAZZ  
STEPS

mjazz



## Heritage

**FAMILY HISTORY  
ONE TO ONE SESSIONS****FREE** Online or phone **2pm, 2.45pm, 3.30pm / Tuesday 9 January****2pm, 2.45pm, 3.30pm / Tuesday 5 March**

Are you looking for hints on how to discover more about your family's history? Sign up for a **FREE** one-to-one conversation with one of our librarians. Family History Surgery for beginners - by phone or video call.

**Booking Info:**  Booking required  Advised booking  No booking needed

## Heritage Talk

**THE MIDLAND RAILWAY:  
MANSFIELD TO WORKSOP LINE****£3** Inspire Libraries **Mansfield Central Library**  
**2pm / Tuesday 16 January****Worksop Library**  
**2pm / Wednesday 21 February**


**JOIN  
THE TALK**

This talk celebrates the Midland Railway between Mansfield and Worksop by looking at the fight to make that connection and showing how it boosted the local economy by enabling the sinking of many coal mines, which created over 17,000 jobs by the 1930s. With this came the rapid expansion of local towns and villages, including the entirely new village of Rhodesia, near Worksop.

The railway provided the much-needed link to the wider network, enabling local people to enjoy a day's excursion, visit family, or see that all-important football match.



**JOIN PROJECT OFFICER, DENIS HILL, TO LEARN  
MORE ABOUT THE RAILWAY AND ITS HISTORY  
TO DATE AS PART OF THE ROBIN HOOD LINE.**

## Heritage

## EXPLORING PARISH REGISTERS

FREE Beeston Library 

2pm / Wednesday 17 January

Join one of our heritage librarians for a small group session to talk about the history of Nottinghamshire's parish registers and look at some of the fascinating stories they contain. Parish registers of baptisms, marriages and burials are a major resource for anyone beginning their family history.

The Nottinghamshire records are now available via **Ancestry.com** which is free to use in Inspire Libraries and at Nottinghamshire Archives.



## Heritage

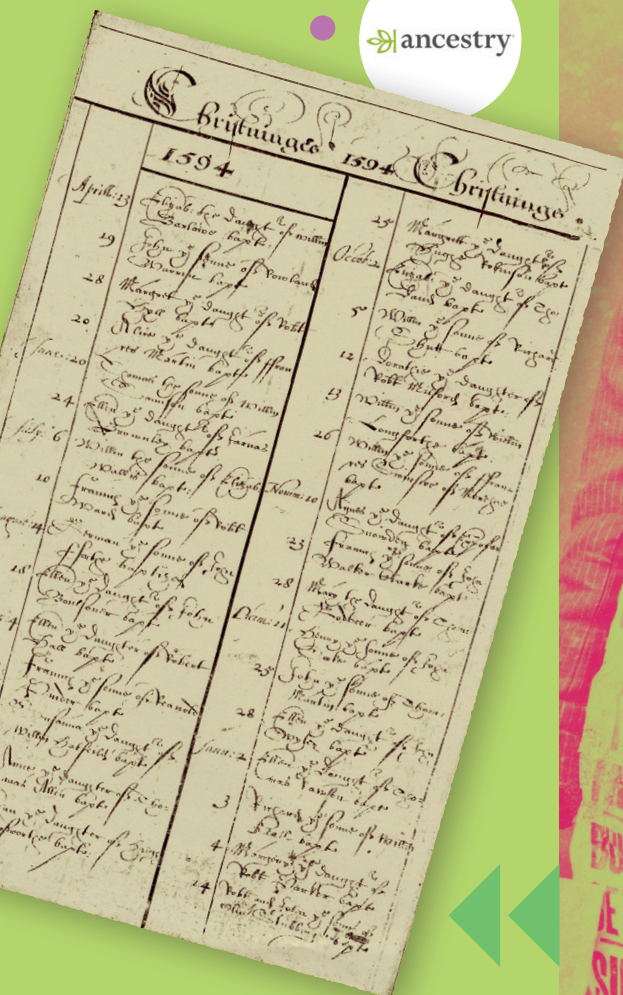
## EXPLORING LOCAL NEWSPAPERS

FREE West Bridgford Library 

2pm / Tuesday 27 February

Join one of our heritage librarians for a small group session, where they will demonstrate the range and variety of local newspapers available in Inspire libraries on microfilm and online.

The British Newspaper Archive can be accessed for FREE in Inspire libraries, and at Nottinghamshire Archives.





 **ancestry**

## Heritage

### EXPLORING ANCESTRY

**FREE** Mansfield Central Library 

**2pm / Tuesday 19 March**

Curious to learn more about your family's history? Join one of our librarians for a small group session, where they will demonstrate some key features of this valuable online research tool.

**Ancestry.com** is **FREE** to use in Inspire Libraries, and at Nottinghamshire Archives.

**SEGELOCUM WAS POSSIBLY  
THE MOST IMPORTANT ROMAN  
TOWN IN NOTTINGHAMSHIRE.**

## Heritage Talk

### SEGELOCUM ROMAN TOWN

**£3** Worksop Library 

**2pm / Wednesday 20 March**

The hamlet of Littleborough is all that is now left to mark the location of what was once the large bustling town of Segelocum. Situated at the junction of the road from Lincoln to Doncaster and the River Trent, Segelocum was possibly the most important Roman town in Nottinghamshire.

Emily Gillott, Planning Archaeologist from Nottinghamshire County Council, will present the results of previous excavations from this site, which is often overlooked in studies in the small towns of Roman Britain.

**Booking Info:**  Booking required

 Advised booking

 No booking needed

## Heritage Talk

**THE CAPRICIOUS RIVER TRENT:  
HAZLEFORD TO DUNHAM BRIDGE****£3** Beeston Library **2pm / Wednesday 20 March****THE RIVER TRENT DOWNSTREAM  
FROM NOTTINGHAM HAS A  
WAYWARD AND ENTHRALLING  
HISTORY ALL ITS OWN.**

This talk by Adrian Gray takes us on a journey down the river, looking at lost channels, forgotten ferries, and how the changing course of the river has affected communities along the way.

## Heritage Talk

**LOVE, DUTY & SACRIFICE:  
A LOVE STORY OF  
NOTTINGHAMSHIRE****£3** West Bridgford Library **2pm / Tuesday 26 March**

Author Nicola Webb tells the story of John Patricius (Patrick) Chaworth Musters who, in 1860 is born, heir to a wealthy landowning and mining family in Annesley, Nottinghamshire. Mary Anne Sharpe joins the household as a junior housemaid in 1881.

They become a couple, and failing to part them, Patrick's parents send them to live in Norway, unwed, but away from "polite society".

Four years and four children later, Patrick inherits the family's vast estate, returns to England with Mary Anne and marries her.

**THIS IS TRULY A STORY OF LOVE,  
DUTY, AND SACRIFICE, WHICH DEFIED  
BOTH CONVENTION AND CLASS.**



## Heritage

**BEHIND THE DOOR –  
NOTTINGHAMSHIRE ARCHIVES TOUR****£3** Nottinghamshire Archives **(B)****11am / Friday 1 December****2.30pm / Tuesday 5 December**

Discover the hidden world of heritage and join us on a tour behind the scenes as we uncover fantastic documents held within Nottinghamshire Archives. Marvel at the strange beasts that lurk within the millions of records, learn the alchemical secrets of the conservation studio and enjoy a display of strange and magical highlights from the collections.

**END YOUR JOURNEY WITH A QUIZ  
ABOUT THE MYTHS AND LEGENDS  
OF NOTTINGHAMSHIRE.**



## Heritage

**ARCHIVES ESCAPE!****£5** Nottinghamshire Archives **(B)****11.30am / Saturday 2 December**

You have become trapped inside Nottinghamshire Archives! Solve the fiendish clues scattered throughout records of the past to escape - time is running out!

**CAN YOU  
ESCAPE THE  
ARCHIVES?**



**CHECK  
THIS OUT**  
**FANTASY: REALMS  
OF IMAGINATION  
EXHIBITION**

P4 &amp; P5

Booking Info: **(B)** Booking required**(A)** Advised booking**(N)** No booking needed

## Heritage Talk

### FROM GOTHIC TO ART DECO

£5 Nottinghamshire Archives <sup>B</sup>

2.15pm / Wednesday 24 January

Join staff from Nottinghamshire Archives to explore the building heritage of the city, focusing on different architectural styles, with an opportunity to explore documents on display.



## Heritage

### NOTTINGHAMSHIRE ARCHIVES TOUR

£3 Nottinghamshire Archives <sup>B</sup>

11am / Thursday 1 February

2.30pm / Thursday 7 March

An introduction to the Archives with a tour of the search room and storage areas and a chance to view some unique and incredible highlights from the collections. Enjoy a display and tour of the conservation studio as an introduction to what conservation is and find out about the different types of materials treated, and the techniques used. Plus, we will demonstrate how we would repair a torn page and how to sew on a traditional book binder's sewing frame.

## Heritage Workshop

### INTRODUCTION TO BOOK BINDING: PAMPHLET BINDING

£10 Nottinghamshire Archives <sup>B</sup>

10.30am / Wednesday 6 March

JOIN THE CONSERVATION TEAM AT NOTTINGHAMSHIRE ARCHIVES FOR A RELAXED MORNING MAKING A PAMPHLET BOOK.

This workshop is an introduction to book binding covering the tools, materials, and terminology. A pamphlet binding is a single section book block with boards covered in paper or cloth, which make ideal notebooks or sketchbooks to keep or give as gifts to family and friends.

All materials and equipment will be provided.



## Heritage Workshop

### ROUTES TO ROOTS: DISCOVERING OLD MAPS WORKSHOP

£5 Nottinghamshire Archives <sup>B</sup>

2.15pm / Thursday 21 March

Old maps can provide a wealth of information. Join one of our archivists for this workshop where we will explore different types of maps and how they can be used, in particular tithe and enclosure.



## DEMENTIA FRIENDLY FILM SCREENINGS

Relaxed and suitable for all but particularly those with memory challenges.



### Dementia Friendly

#### POLAR EXPRESS (U)

£1 Mansfield Central Library (A)

1.30pm / Wednesday 6 December

On Christmas Eve, a young boy embarks on a magical adventure to the North Pole on the Polar Express, while learning about friendship, bravery, and the spirit of Christmas.

### Family Film Screening

#### THE GRINCH (U)

£1 Sutton-in-Ashfield Library (A)

10am / Saturday 9 December

Benedict Cumberbatch lends his voice to the infamous Grinch, who lives a solitary life inside a cave on Mt. Crumpet with only his loyal dog, Max, for company.



### Dementia Friendly

#### TOY STORY 4 (U)

£1 Mansfield Central Library (A)

1.30pm / Wednesday 14 February

When a new toy called Forky joins Woody and the gang, a road trip alongside old and new friends reveals how big the world can be for a toy. Join us for a themed craft before the screening from 12 – 1pm.

### Dementia Friendly

#### ON THE TOWN (U)

£1 Kirkby-in-Ashfield Library (A)

10am / Thursday 21 March

Three sailors wreak havoc as they search for love during a whirlwind 24-hour leave in New York City, in this musical film starring Gene Kelly, Frank Sinatra, Betty Garrett and Ann Miller.



Dementia Friendly films shown in partnership with Film Hub Midlands. Supported by:



### SING WITH FRIENDS

FREE Mansfield Central Library (N)

Festive Special 13 December

Restarts 1.30pm / Wednesday 10 January

As anyone that has seen the Our Dementia Choir documentaries with Vicky McClure will know, music can bring joy and trigger memory for those with Dementia and their friends, family and carers. Inspire are expanding their aim of "providing opportunities for people to come together through film" to include the memorable movie magic of film music.

Mansfield Library are delighted to continue hosting these lunchtime singing sessions as a companion to our regular film screenings.

This event is open to all and there is no need to book – just come along and join in!

JOIN US TO REMINISC  
USING MUSIC FROM  
THE MOVIES AND OTHER  
FAVOURITES – WITH A  
CUP OF TEA & BISCUITS!



FOR  
ALL EVENT  
DATES  
Visit:  
inspireculture.org.uk/singwithfriends



## Fantasy Event

Film Screening  
**STARDUST (PG)**

£2 Workshop Library (A)

6pm / Tuesday 23 January

In a countryside town bordering on a magical land, a young man makes a promise to his beloved that he'll retrieve a fallen star by venturing into the magical realm. Based on Neil Gaiman's fantasy graphic novel, a star-studded cast brings his vision to life in this acclaimed adaptation.

## Fantasy Event

Family  
Screening  
and Activity

**SMALL  
WORLD  
CINEMA  
SHADOW PLAY**

£1 Kirkby-in-Ashfield Library (A)

10.30am / Saturday 10 February

Join us this half-term to create a world of make-believe using paper cut-outs or just our hands, a torch and a blank wall. The activity will be followed by a selection of short films featuring shadows and paper cut-out animations including a fairy tale by silhouette artist Lotte Reiniger.

Recommended for ages 5+



## Fantasy Event

Film Workshop

**MONSTROUS FLESH:  
WOMEN'S BODIES  
IN HORROR**

£5 Beeston Library (B)

7pm / Tuesday 20 February

"Horror films offer a fantasy space for women whose bodies betray them"  
Harkins, 2017

To many people, the horror genre is synonymous with gendered violence and sexual exploitation. However, the genre is also a rich vehicle for female empowerment. This session is designed to explore the origins of well known and loved tropes in the horror genre, sci-fi and fantasy: vampires, witches, demonic pregnancies, and the decrepit ageing body are used to give voices to cultural and social anxieties rooted in the past and present. Drawing examples from classic, cult and contemporary horror and fantasy cinema from around the globe, this interactive session will get attendees to reflect on their personal relationship with the genre.

### ABOUT THE WORKSHOP LEADER:

Clelia McElroy is a Nottingham-based film events producer, and the founder-director of *Monstrous Flesh*, a multi-disciplinary venture exploring the intersections of the horror genre and feminism, through curated film courses, screenings, panel discussions and the *Monstrous Flesh* Podcast.

For adults aged 18+



No booking needed

(N)

Advised booking

(A)

Booking required

(B)

Booking Info:



# Inspire Adult Learning

Culture | Learning | Libraries



**Learn local, go far: develop your skills and pick up new hobbies with our brand new adult learning courses.**

**Inspire Adult Learning have hundreds of free\* and low-cost courses for adults across Nottinghamshire and online.**

Whether you want to progress your career with a recognised qualification, or you're just looking to have fun, Inspire's adult learning courses are for everyone. There's a huge range of subjects available – from maths, IT, science and English, to local history, languages, music, arts and crafts.

Try a tasty cupcake decorating class, learn to play guitar, brush up on your Italian, become an expert bookkeeper, discover your inner poet, master an Excel spreadsheet, or get fit: depending on your circumstances, many courses will be free or low-cost, with accredited courses fully funded for those in receipt of certain benefits, so you can try as many as you like. They make the perfect addition to your CV.

If you're a bit unsure and want to take that initial step back into the world of work, our free ReNew courses can help you gain confidence and skills to help you back into employment. We also offer free maths and budgeting classes through Multiply, specifically for those who aren't confident with numbers. For those who need more flexibility, there's online and distance learning courses, designed for you to learn from the comfort of your own home.

*Some of our courses take place at our newly refurbished Library and Learning Centres in Stapleford and Kirkby-in-Ashfield – if you get the chance, be sure to drop in and say hi!*

Check out our fantastic range of courses for school leavers at Inspire College where our students earn up to £100 a month just for studying with us!

We also offer traineeships, where you can earn a qualification as you work and develop your employment skills.

Visit [inspireculture.org.uk/college](https://inspireculture.org.uk/college)

**EARN AS  
YOU LEARN!**

**UP TO £100  
PER MONTH!**

Child benefit is  
not affected

\*subject to eligibility criteria



Free

SKILLS  
FOR LIFE



# Multiply *Your Confidence*

## Maths doesn't have to be scary!

Grow your confidence with numbers, whether you need it for work, household budgeting, or just helping kids with homework, and brush up on maths skills including fractions, statistics and division in a no-pressure, relaxed environment, with our Multiply courses.

Whether you want to attend a quick drop-in session to give your skills a boost or a more advanced offers such as GCSE Maths, Level 2 Functional Skills Qualification, or equivalent, we can help you learn at a pace that suits you.

Visit our website to find out more

[inspireculture.org.uk/multiply](https://inspireculture.org.uk/multiply)

## Enjoy a fun, friendly, high-quality learning experience with Inspire!

Pick up a course guide today in your local library, or view all our courses online at [inspireculture.org.uk/learning](https://inspireculture.org.uk/learning)

## BOOK NOW!

[inspireculture.org.uk/learning](https://inspireculture.org.uk/learning)  
[learning@inspireculture.org.uk](mailto:learning@inspireculture.org.uk)  
01623 677200

"FREE\* AND  
LOW-COST  
COURSES"

Learn in  
your local  
library

Distance  
Learning

Online  
Courses

Affordable  
courses  
on your  
doorstep



# EVENTS DIARY

December 2023 - March 2024


DATE	EVENT	TYPE	LOCATION	£	PAGE
27 Oct - 20 Dec	<b>Fantasy: Realms of Imagination</b>	Exhibition	Nottinghamshire Archives	<b>FREE</b>	4
1 Nov - 20 Dec	<b>Inspire Community Open</b>	Exhibition	Beeston Library	<b>FREE</b>	13
4 Nov - 21 Dec	<b>The Big Draw 2023: Time to Connect</b>	Exhibition	Workshop Library	<b>FREE</b>	14
28 Nov - 20 Dec	<b>Sherwood Forest Up Close</b>	Exhibition	West Bridgford Library	<b>FREE</b>	13
1 Dec	<b>Behind the Door: Nottinghamshire Archives Tour</b>	Heritage	Nottinghamshire Archives	<b>£3</b>	20
2 Dec	<b>Archives Escape!</b>	Heritage	Nottinghamshire Archives	<b>£5</b>	20
3 Dec	<b>Sherwood Forest Up Close - Stories Behind the Lens</b>	Talk	West Bridgford Library	<b>£3</b>	12
4 Dec	<b>An Inspired Christmas Concert</b>	Live Music	Royal Concert Hall, Nottingham	<b>£5/£3</b>	27
5 Dec	<b>Behind the Door: Nottinghamshire Archives Tour</b>	Heritage	Nottinghamshire Archives	<b>£3</b>	20
6 Dec	<b>Polar Express (U)</b>	Film Screening	Mansfield Central Library	<b>£1</b>	22
9 Dec	<b>Awesome Nature Crafts and Games</b>	Children's Author Event	Beeston and West Bridgford Libraries	<b>£3</b>	6
9 Dec	<b>The Grinch (U)</b>	Film Screening	Sutton-in-Ashfield Library	<b>£1</b>	22
11 - 13 Dec	<b>Jazz Steps: Toni Kofi's Tenor Legacy</b>	Live Music	Beeston, Workso and West Bridgford Libraries*	<b>£13</b>	15
From 13 Dec	<b>Sing with Friends</b>	Community	Mansfield Central Library	<b>FREE</b>	22
4 Jan - 14 Feb	<b>The Big Draw 2023: Time to Connect</b>	Exhibition	West Bridgford Library	<b>FREE</b>	14
6 - 28 Jan	<b>Fantasy: Realms of Imagination</b>	Exhibition	Workshop Library	<b>FREE</b>	4
From 8 Jan	<b>Adventures in Music</b>	Under 5s	Various Inspire Libraries	<b>FREE</b>	9
From 9 Jan	<b>The Lullaby Bank</b>	Under 5s	Bingham Library	<b>FREE</b>	9
9 Jan	<b>Family History One to One Sessions</b>	Heritage	Online or phone	<b>FREE</b>	16
From 10 Jan	<b>The Lullaby Bank</b>	Under 5s	West Bridgford Library	<b>FREE</b>	9
From 11 Jan	<b>The Lullaby Bank</b>	Under 5s	Beeston Library	<b>FREE</b>	9
16 Jan	<b>The Midland Railway: Mansfield to Workso Line</b>	Heritage Talk	Mansfield Central Library	<b>£3</b>	16
17 Jan	<b>Exploring Parish Registers</b>	Heritage	Beeston Library	<b>FREE</b>	17
20 Jan	<b>Imagination Gaming</b>	Workshop	Workso Library	<b>FREE</b>	5
23 Jan	<b>Stardust (PG)</b>	Film Screening	Workso Library	<b>£2</b>	23
24 Jan	<b>From Gothic to Art Deco</b>	Heritage Talk	Nottinghamshire Archives	<b>£5</b>	21
26 Jan	<b>OSNotts 2024 application deadline</b>				14
27 Jan	<b>Nottingham Playhouse Presents: Hansel and Gretel</b>	Family Theatre	Workso Library	<b>£4/£7</b>	5
31 Jan	<b>What Happens When We Read? With Mahsuda Snaith</b>	Author Event	Arnold Library	<b>£3</b>	10
1 - 24 Feb	<b>Fantasy: Realms of Imagination</b>	Exhibition	Kirkby-in-Ashfield Library	<b>FREE</b>	4
1 Feb	<b>Nottinghamshire Archives Tour</b>	Heritage	Nottinghamshire Archives	<b>£3</b>	21
3 Feb	<b>Into Goblyn Wood with Anna Kemp</b>	Children's Author Event	Mansfield and Workso Libraries	<b>£3</b>	5
5 - 16 Feb	<b>Nottingham Festival of Science and Curiosity</b>	Workshops	Various Inspire Libraries	<b>FREE</b>	6
6 Feb	<b>K.L. Slater</b>	Author Event	Hucknall Library	<b>£3</b>	10
8 Feb	<b>In Conversation with M.A. Kuzniar</b>	Author Event	Beeston Library	<b>£5</b>	10
10 Feb	<b>Small World Cinema: Shadow Play</b>	Film and Activity	Kirkby-in-Ashfield Library	<b>£1</b>	23
14 - 16 Feb	<b>Boxed In: A Daryl &amp; Co. and Half Moon Co-production</b>	Family Theatre	Various Inspire Libraries	<b>£4/£7</b>	7
14 Feb	<b>Toy Story 4 (U)</b>	Film Screening	Mansfield Central Library	<b>£1</b>	22
15 Feb	<b>Imagination Gaming</b>	Workshop	Kirkby-in-Ashfield Library	<b>FREE</b>	5
17 Feb - 30 Mar	<b>The Big Draw 2023: Time to Connect</b>	Exhibition	Beeston Library	<b>FREE</b>	14
19 - 21 Feb	<b>Jazz Steps: Much Ado About Jazz</b>	Live Music	Beeston, Workso and West Bridgford Libraries*	<b>£13</b>	15
20 Feb	<b>Caroline England</b>	Author Event	Kirkby-in-Ashfield Library	<b>£3</b>	10

\* Only 1 venue per day. See event listing for more details.

DATE	EVENT	TYPE	LOCATION	£	PAGE
20 Feb	<b>Monstrous Flesh: Women's Bodies in Horror</b>	Film Workshop	Beeston Library	<b>£5</b>	23
21 Feb	<b>The Midland Railway: Mansfield to Worksop Line</b>	Heritage Talk	Worksop Library	<b>£3</b>	16
24 Feb	<b>Fantastic Festivals</b>	Family Concert	Beeston Library	<b>£4/£7</b>	8
26 Feb - 2 Mar	<b>Magical Missions! With Nottingham Playhouse</b>	Under 5s	Various Inspire Libraries	<b>£2</b>	7
27 Feb	<b>Exploring Local Newspapers</b>	Heritage	West Bridgford Library	<b>FREE</b>	17
1 - 28 Mar	<b>Little Creatives</b>	Under 5s	Various Inspire Libraries	<b>FREE</b>	9
5 Mar - 16 Apr	<b>I Am A Creator</b>	Exhibition	Mansfield Central Library	<b>FREE</b>	13
5 Mar	<b>Family History One to One Sessions</b>	Heritage	Online or phone	<b>FREE</b>	16
6 Mar	<b>Introduction to Book Binding: Pamphlet Binding</b>	Heritage	Nottinghamshire Archives	<b>£10</b>	21
7 Mar	<b>Nottinghamshire Archives Tour</b>	Heritage	Nottinghamshire Archives	<b>£3</b>	21
9 Mar	<b>Fantastic Festivals</b>	Family Concert	Southwell Library	<b>£4/£7</b>	8
9 Mar	<b>Takeover Festival</b>	Festival	Four Seasons Shopping Centre, Mansfield	<b>FREE</b>	
9 Mar	<b>Luna Loves Library Day - The Musical</b>	Family Theatre	Beeston Library	<b>£4/£7</b>	8
10 Mar	<b>Luna Loves Library Day - The Musical</b>	Family Theatre	West Bridgford Library	<b>£4/£7</b>	8
13 Mar	<b>Sarah Ward</b>	Author Event	Worksop Library	<b>£3</b>	
18 - 20 Mar	<b>Jazz Steps: Quartet Con Alma</b>	Live Music	Beeston, Worksop and West Bridgford Libraries*	<b>£13</b>	15
19 Mar	<b>T.M. Logan</b>	Author Event	Beeston Library	<b>£3</b>	10
19 Mar	<b>Exploring Ancestry</b>	Heritage	Mansfield Central Library	<b>FREE</b>	18
19 Mar	<b>Frances Brody</b>	Author Event	Mansfield Central Library	<b>£3</b>	10
20 Mar	<b>Segelocum Roman Town</b>	Heritage Talk	Worksop Library	<b>£3</b>	18
20 Mar	<b>The Capricious River Trent: Hazeleford to Dunham Bridge</b>	Heritage Talk	Beeston Library	<b>£3</b>	19
21 Mar	<b>Routes to Roots: Discovering Old Maps Workshop</b>	Heritage	Nottinghamshire Archives	<b>£5</b>	21
21 Mar	<b>On The Town (U)</b>	Film Screening	Kirkby-in-Ashfield Library	<b>£1</b>	22
24 Mar	<b>Fantastic Festivals</b>	Family Concert	West Bridgford Library	<b>£4/£7</b>	8
26 Mar	<b>Love, Duty &amp; Sacrifice: A Love Story of Nottinghamshire</b>	Heritage Talk	West Bridgford Library	<b>£3</b>	19
27 Mar	<b>Tom Mead</b>	Author Event	Bingham Library	<b>£3</b>	10

## Live Music

# AN INSPIRED CHRISTMAS CONCERT

**£5 adults /  
£3 children & concessions**  
Royal Concert Hall Nottingham   
**7pm – 9pm / Monday 4 December**

Join us as we celebrate the start of the festive period with this showcase of amazing performances from talented young singers from Nottinghamshire schools and choirs.

 **NATIONAL  
YOUTH CHOIR**

 **THEATRE  
ROYAL  
CONCERT  
HALL**

 **Inspire  
Nottinghamshire  
Music Hub**  
Culture | Learning | Libraries

Inspire would like to thank  
Arc Partnership for their kind sponsorship  
of this year's Christmas concert.

**arc**  
partnership

# BE INSPIRED AT YOUR LOCAL LIBRARY!

Books

Café

Children's activities

Computers

Conference facilities

Courses

Events

Exhibitions

Groups

Information services

Local heritage collection

Meeting room hire

Photocopying

Printing

Study space

Theatre

Wi-Fi

Join and use many of our services  
**FREE!**

Visit [inspireculture.org.uk/libraries](http://inspireculture.org.uk/libraries)  
to find out which fantastic services  
are available in your local library.

**We look forward to welcoming you!**

Ask Inspire: 01623 677 200

