

## Nottinghamshire Archives Conservation Department

### Conservation Treatment Report – 25<sup>th</sup> March 2025

#### Family Photograph

##### Description

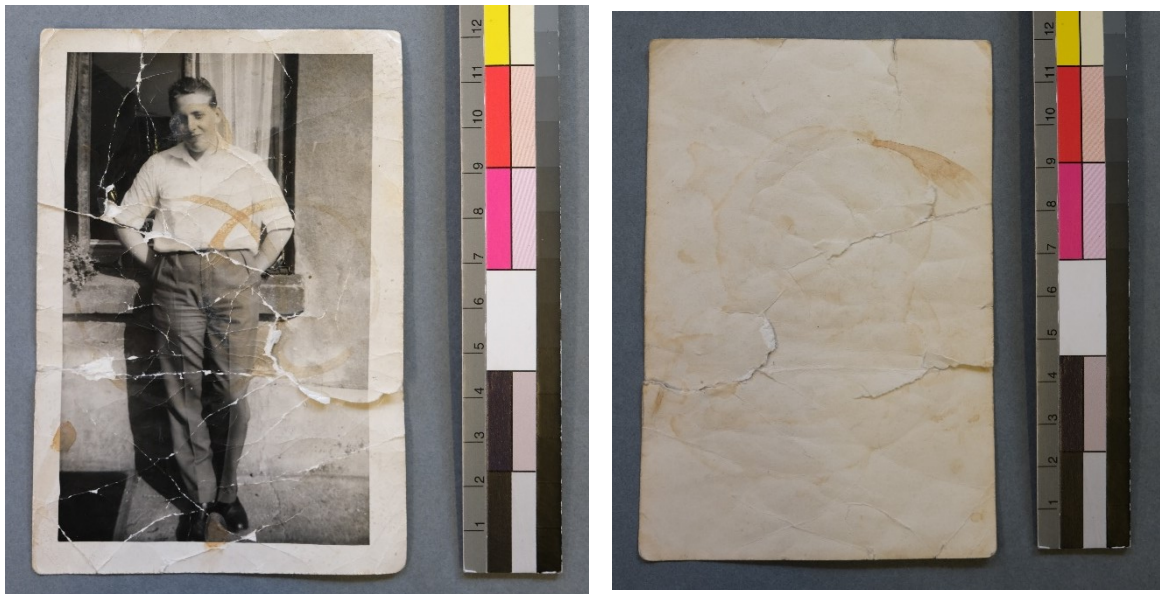
Dimension (mm) H: 120 W: 80

Black and white photographic print.

##### Condition

The photograph has damage to the emulsion side. Where it has been folded or creased this has made cracks in the emulsion, so the surface has a craquelure to it. Some of these lines have torn through the paper and there are losses where the emulsion layer has flaked away along the lines that have formed on the surface.

In addition, there are stains on both the recto and verso. The staining is in patches across the whole surface and there is also a general layer of surface dirt on the recto of the photograph.



*Fig. 1 & 2: Recto and verso of the photographic print before conservation.*



*Figs. 3 & 4: Details of the tears, craquelure surface and staining before conservation treatment.*

### **Treatment Report**

The verso of the photograph was lightly humidified with a mist of water and pressed between blotter and board to flatten out the print and align the tears.

The border of the print was surface cleaned with smoke sponge and the whole emulsion side of the print was brush with a soft brush to remove any surface dirt. IMS (industrial methylated spirit) and deionised water in a 50:50 mix was used on a cotton swab to remove surface dirt from the border on the recto. The same solution was used on the areas of staining after what could be removed mechanically was carried out. A soft brush and spatula were used to mechanically remove the accretions on the surface of the emulsion that were friable. The accretions looked like they were coffee and due to the duration, they have sat on the surface, some of the staining of the emulsion layer is very ingrained. Some light staining of the emulsion remains but further treatment would risk damaging the emulsion in these areas further.

The tears in the photograph were repaired from the verso using Japanese tissue and purified wheat starch paste (WSP) and pressed between blotter and Bondina.

On the recto there were some losses to the emulsion and paper fibres where the print had torn, these were infilled with Japanese tissue fibres and WSP. Once dry they were toned in situ using acrylics.

The treatment took 1 hour in total.



*Figs. 5 & 6: Removal of surface dirt on the print.*



*Fig. 7: After stain removal but before infilling losses.*



*Fig. 8: After conservation treatment.*