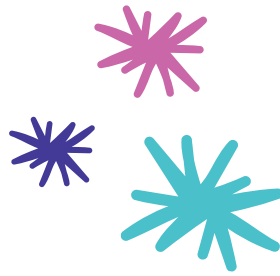


**INSPIRE
YOUTH
ARTS**



Able Orchestra 360

**Fletcher's Theatre
Saturday 15 November 2025**

**5:30pm Sensory Stations Exploration
7pm Performance**

Scan for
accessible
content:



Able Orchestra (AO) 360

AO 360 is a live, immersive and inclusive music and digital showcase, celebrating Able Orchestra (AO) groups and partners from across Nottinghamshire.

Expect new collaborations, stunning visuals, and a celebration of inclusivity, music and technology.

AO have a number of opportunities for young people aged 11-25 with a learning and/or physical disability and/or who are neurodivergent across the county of Nottinghamshire.

Scan here to find out more about AO:



Inspire Youth Arts

Inspire Youth Arts delivers high-quality, inclusive arts opportunities for young people across Nottinghamshire. Inspire Youth Arts are producers for AO.

Our programme includes regular term-time sessions, bespoke school holiday projects, and unique experiences in music, dance, and digital art. We collaborate with artists, partners, and cultural organisations from across Nottinghamshire, the Midlands, and nationally.

Scan here to find out more about Inspire Youth Arts at:



Access and Inclusion

We are committed to creating a performance with access and inclusivity at the heart.

The audience space during the performance has been designed with this in mind. Please feel free to position yourself where you are most comfortable and you may move in and out of the space freely.

Beanbags are positioned in front of the stage for sitting.

Groups of chairs and available space is in the centre, for those who wish to sit and for wheelchair users.

If you find that you require additional seating or seating to be moved to accommodate your group in the centre, please speak to a member of staff and they will happily arrange this for you.

Finally, there are some rows of raked seating at the back, to allow for a raised viewing platform.

Sensory Stations

We invite you to explore a range of sensory stations and activities in the foyer, inspired by the work you will see in the main showcase. Many of the activities have been designed and created by participants in AO and other Inspire Youth Arts projects.

Virtual Reality Headset Station

Explore immersive visual worlds built by young artists in the Proto-Type Digital group, mentored by Urban Projections. The young artists responded to music created by Portland College and Fountainsdale School Digital Music groups. Take a moment to fully explore before hearing the live performances!

Seasonal Sensory Station

Explore the seasons through touch, scent, sight and sound! Immerse yourself in the seasons through audio-visual content created by AO participants, and other sensory delights!

Journey into Jarabi Station

Jarabi is a piece of West-African folk music that has been explored by AO participants this year. Learn more about the meaning of Jarabi and the instruments that will be used with professional artists. There are activity sheets to complete today or feel free to take them home with you.

Performances

Spring Awakened

A collaboration between AO Pioneers, Dyskinetic and Orchestra of the Swan.

Inspired by Orchestra of the Swan's 'Earthcycle' film, originally produced for the 300th anniversary of Vivaldi's Four Seasons, *Spring Awakened* is an original composition by the AO Pioneers, Dyskinetic and Orchestra of the Swan, supported by Orchestras Live.

Beginning in the depths of winter, using a combination of strings, guitar, piano and brass sounds performed on digital instruments such as the CMPSR and traditional instruments, the work builds gradually and eventually emerges into Spring with the sound of beautiful folk vocals by Jackie Oates. *Spring Awakened* is an example of the power of co-creation and the combining of digital and traditional instrumentation.

I'm gonna do it MY WAY!

Fountaindale School

Originally composed for Portland College Summer Showcase, *I'm gonna do it MY WAY!* is a collaboration between participants in Fountaindale School's Digital Music group and vocalist Kiera-Mae. Led by Tom Bacon, the group create original music in school, and have previously composed music to accompany celebrations across the year, including Chinese New Year and Bonfire Night!

Fountaindale School in Mansfield is a specialist school catering to children and young people aged 3 to 18 years. It places strong emphasis on inclusion, care, and community, guided by the ethos that "it takes a village to raise a child".

Don't You Wanna go to Hollywood

Portland College

Don't You Wanna go to Hollywood is an original song created by Portland College Digital Music students from the class of 2024-2025. The song was first performed at Nottinghamshire County Show in May 2025. With its upbeat, fun feel and catchy melody, the group can't wait to share as part of AO 360!

Portland is an Ofsted Outstanding specialist college, residential care provider and centre of excellence for Autism. They believe everyone with disabilities should have a lifetime of opportunity. They are proud to have AO as part of their Newstart Activities programme which focuses on disability sports and art, and offers an exciting calendar of performances, events, fixtures and education programmes.



Summer

AO North Ensemble

First premiered at Portland College Fun Palace, AO North ensemble are excited to share their performance of *Summer* to a big audience! Under the direction of Tom Shawcroft and support of Natalie Morrison, performers play a mixture of CMPSR, keyboards and vocals to produce this piece.

Many participants have a keen interest in digital creation, working alongside artists Natasha Poland and Zoe Shum. The images in the stunning projection were directly produced by the participants. *Summer* is a delight for the senses!

Ash Mash-Up

AO South Ensemble

The newest of the AO ensembles, forming in May 2025, have worked on a pop mash-up inspired by their favourite songs, including vocals, CMPSR, clarinet and guitar.

AO South Ensemble is based at Ash Lea School in Cotgrave, directed by Trekkah Benjamin and supported by Catherine Smith. This is their first ever performance as an ensemble! Once again, stunning visuals have been created directly by the participants with Digital Creatives, Natasha Poland and Zoe Shum.

Interval

Please feel free to explore the Sensory Stations during the interval, which will be 20 minutes.

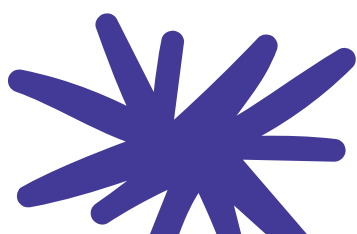
What We Do

Spectrum WASP Music Group

Starting their musical journey as a band, the Spectrum WASP performers started experimenting with digital instruments just two months ago and have developed an exciting composition blending both traditional and digital instruments. Under the direction of Tom Bacon and Loz Shaw, participants wrote this song which captures the essence of the Spectrum WASP band – fun, friendly and diverse!

Spectrum WASP – We are Special People are a charity, providing support for parents with children and young people on the autistic spectrum, with disabilities, special and additional needs.

You can find out more about Spectrum WASP here: spectrumwasp.org



You're Never Alone

AO Pioneers

Following their EP showcase of *New World's Key* in April 2025, the AO Pioneers under the direction of Dyskinetic, have been working on an exciting new work as a band. Featuring Bradley McKnight on vocals, Zoe Pritchard-Tye and Athena Troke on CMPSR, and Marshall Fairbrother on guitar, the song centres around not having to face challenges alone and knowing someone is here for you. The Pioneers believe that this is reflective of the whole AO project.

Journey into Jarabi

- Exploring connection and belonging through music

Journey into Jarabi is a project led by Jude Winwood (kora, percussion, vocals) and Tom Shawcroft (guitar and vocals), featuring Tatenda Chitsamba (percussion, vocals) and Trekkah (bass), working with AO participants to explore how music can spark creativity, connection, and a sense of belonging. At its heart is *Jarabi* – a well-known piece of folk music from the West African tradition of Jaliya, where music and storytelling carry history and meaning.

In Mandinka, *Jarabi* means “love” and expresses affection, commitment, and human connection. Reinterpreted by artists worldwide, it remains a song of unity.

Here it has inspired new responses through drumming, guitar, kora, and shared creativity, blending rhythm and melody into something unique to this community. This performance brings that journey together – an invitation to share in the spirit of *Jarabi* and celebrate music's power to bring people closer.

Jaliya

- Background to Journey into Jarabi

Jaliya is the hereditary art of music, storytelling, and oral history in Mandé cultures of West Africa. It is carried by Jalis (Jalolu, sometimes called Griots), who are born into family lineages where music and words are passed down through generations.

The role of the Jali is more than performance: they are historians, poets, and mediators, entrusted with preserving memory, celebrating values, and guiding their communities through important moments in life.

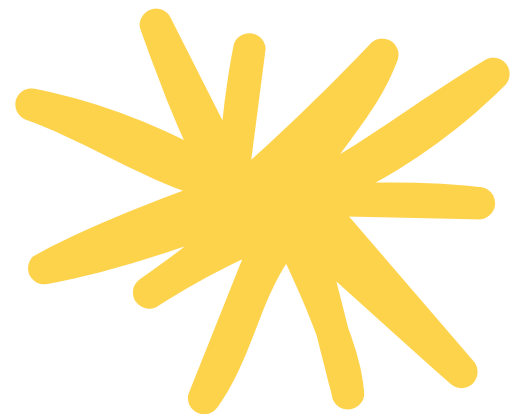
Jaliya is closely associated with a family of instruments - the Kora (21-string harp-lute), Balafon (wooden xylophone), and Ngoni (lute), each one holding its own place in the tradition. Together, music and story create a living practice that continues to connect people today, reminding us that heritage is something carried in both sound and memory.

Performers and Contributors

Aban	Keeley
Athena	Kiera-Mae
Belle	Kieron
Ben	Lewis
Bradley	Lucas
Byron	Mayson
Chloe	Marshall
Cyroflame	Max
Dan	Nathan
Denisa	Reuban
Edith	Scarlett
Elliot	Seth
Elly	Shawn
Fraser	Thomas B
Hayden	Thomas H
Hermione	Thomas W
Jess	Vihaan
Joseph	Zoe
Josie	

Collaborating Artists

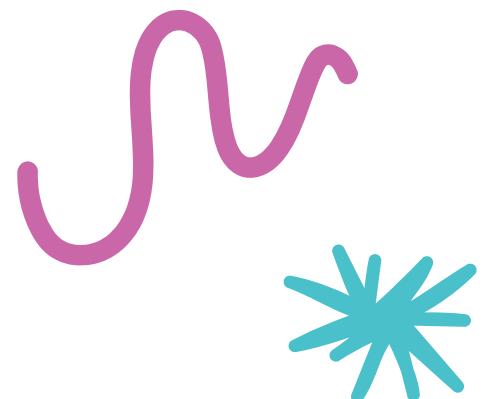
Catherine Smith
David Le Page (Orchestra of the Swan)
Jackie Oates (Orchestra of the Swan)
Jude Winwood (Beatfeet)
Kris Halpin (Dyskinetic)
Loz Shaw
Natasha Poland
Natalie Morrison
Nicci Halpin (Dyskinetic)
Tatenda Chitsamba
Tom Bacon
Tom Shawcroft
Trekka
Urban Projections
Zoe Shum



Get involved!

If you're interested in partnering with us or learning more about AO opportunities, we'd love to hear from you.

For more information or any questions, please email:
ao@inspireculture.org.uk



With Thanks to

All the young people involved
All the artists and collaborators involved
AO Steering group members
Arts Council England
Ash Lea School
Dyskinetic
Fletcher's Theatre
Fountaindale School
Hosts, Athena & Jess
Inspire Youth Arts team
Lindley Productions Ltd
Orchestras Live
Orchestra of the Swan
Portland College
Spectrum WASP
Urban Projections

Share your feedback!

We hope you enjoyed the evening.
We would appreciate your feedback.
Please scan the QR code below to
complete a short survey on your
experience of the event.

