



Culture | Learning | Libraries

# Education Library Service Service Offer 2026 Derby City



[inspireculture.org.uk/els](http://inspireculture.org.uk/els) | 0115 804 4499 | [elsg@inspireculture.org.uk](mailto:elsg@inspireculture.org.uk)

# WHO WE ARE

Welcome to Inspire Education Library Service (ELS) - Inspire is a not-for-profit, community benefit society with charitable status, dedicated to supporting schools in developing strong, sustainable reading cultures. We currently work with more than 270 schools across Nottinghamshire, Nottingham City, Derbyshire and Derby City.

At ELS, we understand the pressures schools face. Our service is designed to be part of the solution - not an extra challenge. Everything we offer is focused on helping schools embed positive reading cultures, respond to the curriculum, support reading for pleasure, raise attainment, and reduce staff workload through expert support and high-quality resources.



## We've invested in 24,500+ books!

Over the past three years alone, we've invested in more than 24,500 carefully selected fiction and non-fiction books to strengthen curriculum delivery and inspire reading for pleasure across all age groups.

## Investing your DfE Pupil Premium with ELS

Joining ELS is an evidence-informed, cost-effective way to invest your DfE Pupil Premium funding. Our offer aligns closely with the EEF's tiered 'menu of approaches' and the DfE Reading Framework, helping schools make choices that are both impactful and compliant with national guidance.

Discover more!



# DERBY CITY

Virtual School Package Jan 26 - Jan 27

## Reading Resources



Non-fiction and fiction books promoting reading for pleasure across the curriculum and beyond.

Curriculum Project Collections

Reading for Pleasure  
Go All In Book Taster Boxes

SEND / Inclusive Resources

Bilingual Books

## Reading Events



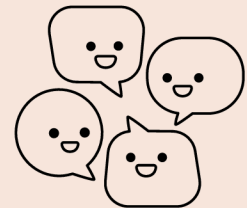
InspiRead Book Award  
(Primary)

Brilliant Book Award  
(Y7/Y8)

In-person and online live  
Author, Poet, Illustrator  
events

Regional and national online  
non-fiction quizzes (October  
2026)

## Reading Communities



Termly Network Meetings  
(Hybrid) with guest  
Authors/Poets/Illustrators/  
Speakers

ELS OU/UKLA Teachers'  
Reading Groups  
(Primary/Secondary)

Specialist Expertise and  
Consultation

Books & Babble Events

Outreach events, support and  
expertise

Access free meeting spaces  
30% discount at Peters - UK's  
leading specialist supplier of  
children's books



# CONTACT US



## Opening Hours

Monday	8.30am-5pm
Tuesday	8.30am-5pm
Wednesday	8.30am-5pm
Thursday	8.30am-5pm
Friday	8.30am-4.30pm

## Address

Education Library Service, Inspire HQ, Glaisdale Parkway, Nottingham, NG8 4GP

## Enquiries

Email: [elsg@inspireculture.org.uk](mailto:elsg@inspireculture.org.uk)

Tel: 0115 804 4499

[inspireculture.org.uk/els](https://inspireculture.org.uk/els)

