

WHAT'S ON

BEESTON LIBRARY

EVENTS & EXHIBITIONS **NOV 18 - MAR 19**

**CHILDREN'S EVENTS
ART WORKSHOPS
FAMILY THEATRE
EXHIBITIONS
LIVE MUSIC
HERITAGE
POETRY**

Image: Automata by Keith Newstead

**The Big Draw 2018: Play!
Exhibition**

SEE PAGE 7



**Nottinghamshire
County Council**

delivered by



Inspire
Culture | Learning | Libraries

As one of Arts Council England's National Portfolio Organisations, we are delighted to present a funded programme of work for children and young people.



In this brochure, the following exciting events are funded by Arts Council England; Mischief and Mystery in Moominvalley, Story Explorers and The Big Draw.



Supported using public funding by
ARTS COUNCIL ENGLAND

An inspired Christmas Concert

| Monday 10 December, 7 - 9pm

Nottingham Royal Concert Hall, Theatre Square, NG1 5ND
Royal Concert Hall Box Office: 0115 989 5555 | www.trch.co.uk
www.inspireculture.org.uk/inspiredchristmas2018



We're an Arts Award Supporter!



Inspire is proud to be registered as an Arts Award Supporter and offers a wide cultural programme across our venues. Many of our events are free or incur a very small charge and many can be accessed by young people looking for opportunities locally to help them achieve an Arts Award. www.inspireculture.org.uk/artsaward

WELCOME TO YOUR NOVEMBER - MARCH SEASON! ARTS AND CULTURE, LIVE AT YOUR LIBRARY

This season we continue the revival of Beeston Library's poetry tradition with a range of quality events: Enjoy readings from a new collection by Nottingham poet Sue Dymoke, and the chance to take part in a workshop where you'll discover *How to Think Like a Poet*. Thanks to funding from Arts Council England, the fabulous Word! spoken word night returns with an International Women's Day special.

Children are in for a treat when family theatre arrives at the library, with the wonderful *Mischief and Mystery in Moominvalley*. A magical storytelling journey is also in store with *Story Explorers: Polar Adventures* - featuring puppetry, music and sensory play for you and your little ones to enjoy. Plus, visit the gallery to discover the Big Draw 2018: Play! exhibition celebrating libraries, amazing automata and the creativity of local children.

Live jazz continues with a line-up that includes the chance to explore 'Sinatra's Repertoire' with The Andrew Wood Trio. And with fascinating heritage talks and more there's a wide variety of events to inspire and entertain. We hope to see you at an event soon!

Inspire is registered for the **Family Arts Standards** for family events in our four largest libraries, including Beeston Library. This means we are working hard to make families feel welcome. Look out for events in our programme and online with this badge:



Find out more: www.familyartsstandards.com

Beeston Library

Foster Avenue, Beeston,
Nottingham, NG9 1AE
0115 925 5168
beeston.library@inspireculture.org.uk

Opening hours

Monday 9am – 6pm
Tuesday 9am – 7pm
Wednesday 9am – 6pm
Thursday 9am – 6pm
Friday 9am – 6pm
Saturday 9am – 4pm

Contact Inspire

ask@inspireculture.org.uk
Ask Inspire 01623 677 200
www.inspireculture.org.uk/askinspire

Booking events

Tickets can be booked online, in person at the library or by phone during opening hours.

Phone 0115 925 5168

Online www.inspireculture.org.uk

Tickets are non-refundable unless an event is cancelled. Programme is subject to change.

Keep up-to-date

Would you like to receive news and information about Inspire, including our events, direct to your inbox? Then visit the website to sign up to our email updates. You'll be able to select from a range of preferences based on your own interests. Visit www.inspireculture.org.uk/emails

Access

Beeston Library is accessible for wheelchair users.

Please let us know if you require a wheelchair space for ticketed events or have access needs.

A large print version of this brochure is available on the website, and can be made available at the library.

www.inspireculture.org.uk



HERITAGE EXHIBITION
SPANISH FLU: NURSING
DURING HISTORY'S
DEADLIEST PANDEMIC

Wednesday 7 November –
Thursday 29 November
Free

This travelling exhibition comes to us from the Florence Nightingale Museum in London - marking 100 years since the outbreak of the Spanish Flu.

Explore the experiences of those who lived and died during the deadliest pandemic in human history, which infected up to half of the world's population, and discover whether a similarly devastating pandemic could happen again. The death toll far outstripped that of the First World War, and there was no cure. Good nursing was the only hope to halt this deadly killer.



LIVE MUSIC
JAZZ STEPS LIVE AT THE LIBRARIES PRESENTS:

MELLOW BAKU

Monday 19 November, 7.30pm

£10/£8

Booking essential

Adults (Under 18s to be accompanied by an adult)

Mellow Baku performs popular jazz standards, American songbook repertoire and instrumentals, with fresh takes on known classics, at times with new and original lyrics. Mellow Baku's voice is described as 'sublime', inspiring audiences with heartfelt, soulful jazz and blues.

Featuring: Mellow Baku (vocals), Barry Lee (keyboard), Mark Trounson (bass) and Andy Ferguson (drums).

In collaboration with

JAZZ
STEPS

This performance also tours to Worksop, Southwell and West Bridgford Libraries.

For details visit

www.inspireculture.org.uk/jazz

"A new voice in British music, with an original blend of reggae soul and jazz. Superb voice, brilliant music, a must for all."

Courtney Pine OBE





HERITAGE TALK
WATSON FOTHERGILL –
A VIRTUAL GUIDED
WALK

Wednesday 21 November, 2pm

£3

Booking advised
Adults

Lucy Brouwer takes us on a tour of Nottingham pointing out the sites and stories connected with iconic local architect Watson Fothergill, without the need to leave our seats. Learn about the buildings of one of Nottingham's most prominent Victorian architects, his signature style and the influence of the Gothic on the city's buildings.

Lucy Brouwer is a researcher, writer, library assistant and art history graduate who is interested in looking with fresh eyes at the familiar. Find out more at

<https://watsonfothergillwalk.wordpress.com>

KEEP UP TO DATE
INSPIRE CULTURE.ORG.UK

FAMILY THEATRE

GET LOST AND FOUND PRESENTS:

MISCHIEF AND MYSTERY
IN MOOMINVALLEY

Saturday 24 November, 11am

Library members £3

Non-library members £6

Booking advised

Ages 3 – 7

the spark
 arts for children



Be sure to pack your imagination and join us on an unforgettable journey to Moominvalley where everyone is welcome, nature thrives, and adventures are plentiful. Based on the much-loved novels by Tove Jansson, this heart-warming show tells the story of a year in Moominvalley.

Magical puppetry, original music and interactive play will delight young audiences. Expect snow, surprises and plenty of Moomin mischief.

Programmed in association with The Spark Arts for Children.

This production will tour six Inspire libraries. For details visit **www.inspireculture.org.uk/popup**





Photo: Graham Lester George



Photo: Graham Lester George

POETRY

WHAT THEY LEFT BEHIND WITH SUE DYMOKE AND JOHN LUCAS

Thursday 29 November, 6.30pm

**Free
Booking advised
Adults (Under 18s to be accompanied by an adult)**

Enjoy a relaxed, early evening treat of live poetry, as we celebrate the publication of *What They Left Behind* – acclaimed poet Sue Dymoke’s third collection for Beeston-based Shoestring Press.

Hear readings and conversation from Sue and poet, novelist, critic and Shoestring Press publisher, John Lucas. John’s most recent poetry collections are *Portable Property* (Greenwich Exchange) and *Things to Say* (Five Leaves).

Join us for the latest event in our revival of Beeston Library’s long and respected tradition of hosting high quality, live poetry.

WORKSHOP

THINKING LIKE A POET WITH SUE DYMOKE

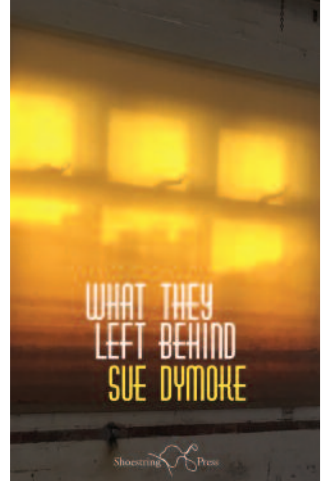
Tuesday 11 December, 6.30 – 8pm

**£10
Booking essential
Adults**

During this poetry workshop led by poet and lecturer Sue Dymoke, you’ll have the chance to try out a number of poetry thinking, writing and editing activities. These are designed to inspire new ideas and to deepen your understanding of how poets write. You will need to bring a notebook, a pen and an open mind. Come prepared to share some of your new writing with other people in the group and to enjoy playing with words.

“Poetry is simply the most beautiful, impressive, and widely effective mode of saying things, and hence its importance.”

Matthew Arnold



Sue Dymoke is the author of three Shoestring Press collections; *What They Left Behind* (2018), *Moon at the Park and Ride* (2012) and *The New Girls – new and selected poems* (2004). Sue is a Reader in Education and Fellow of the Royal Society for the Arts. Her work on poetry education and writing has been internationally recognised with invitations to lecture and lead poetry workshops with adults and young people in Europe, Japan and New Zealand. She is the author of *Drafting and Assessing Poetry* (Paul Chapman); two highly acclaimed co-edited volumes from Bloomsbury: *Making Poetry Matter: international research on poetry pedagogy* and *Making Poetry Happen: transforming the poetry classroom* and, with Andy Croft, she edited the anthology *Not Just a Game: Sporting Poetry* (Five Leaves).

Sue lives in Nottingham.

LIVE MUSIC

JAZZ STEPS LIVE AT THE LIBRARIES

PRESENTS:

CHRIS YOUNG WITH THE ANDREW WOOD TRIO - EXPLORING SINATRA'S REPERTOIRE

Monday 10 December, 7.30pm

£10/£8

Booking essential

Adults (Under 18s to be accompanied by an adult)

The Andrew Wood Trio is a classic jazz piano trio, joined here by the superb Birmingham-based alto saxophonist Chris Young; together exploring some of the classy catalogue of music made famous by Frank Sinatra.

This tight-knit trio has performed alongside Tina May, Dave O'Higgins, Julian Siegel, Tony Kofi and Dennis Rollins amongst many other outstanding soloists. Featuring: Andrew Wood (drums), Chris Young (alto), Matthew Ratcliffe (piano) and Martyn Spencer (bass).

In collaboration with Jazz Steps.

JAZZ STEPS

This performance also tours to Worksop, Southwell and West Bridgford Libraries. For details visit www.inspireculture.org.uk/jazz



EXHIBITION

The Big Draw 2018: Play!

Friday 4 January – Wednesday 13 February

Free



Visit The Big Draw 2018 exhibition and discover what happened when the circus visited the Library! The exhibition centrepiece - by wonderful automata maker Keith Newstead - illustrates the hilarious antics that

ensued. Keith was inspired by pupils from twelve Nottinghamshire primary schools and the fantastic professional artist Emma Reynard. They all had fun letting their imaginations, creativity and pencils run wild to produce an exhibition that celebrates fabulous libraries, amazing automata and the ever playful Big Draw!

The Big Draw is the world's biggest drawing festival which takes place every October. The theme for The Big Draw 2018 was Play!





HERITAGE TALK
EXPLORING LOCAL MAPS

Wednesday 16 January, 2pm
Free
Booking essential
Adults

Discover hints and tips on how to find and interpret historic local maps. Led by one of our Heritage Librarians, this group session will also explore the range and variety of maps available in Inspire libraries.



UNDER FIVES
STORY EXPLORERS:
POLAR ADVENTURES
Friday 1 February, 10.30am
Free
Booking advised
Ages 2 - 5



A magical storytelling journey for you and your little one, in association with Nottingham Playhouse. Through puppetry, music and sensory play, Story Explorers will unleash your child's imagination and take them on an exciting storytelling adventure. Join us as we set off to explore snowy polar lands – make sure you wrap up warm!

Story Explorers returns to Beeston Library in April with a Fantastical Forests adventure.

Story Explorers is taking place at 12 Inspire libraries.
For details visit
www.inspireculture.org.uk/explorers

"There's always room for a story that can transport people to another place."

J.K. Rowling



FAMILY CONCERT
THE IMPOSSIBLE JOURNEY: A MUSICAL TIME TRAVELLING ADVENTURE
Saturday 9 February, 1.30pm
Library members £3
Non-library members £6
Ages 5 - 11
Booking advised



Our orchestral band The Hubs are lost in time! Can you help them find their way home?

Join us for a fun family concert as our marvellous musicians whizz through time and space performing music from *Doctor Who* and *Back to the Future* alongside popular classics from Beethoven, Gershwin and Elvis!

After the performance meet the musicians for musical fun and games and try out some instruments for yourself.

For more about our family concerts visit
www.inspireculture.org.uk/familyconcerts



LIVE MUSIC**JAZZ STEPS LIVE AT THE LIBRARIES PRESENTS:****BRIGITTE BERAHA
SINGS BRAZILIAN
AND AMERICAN LOVE SONGS****Monday 11 February, 7.30pm****£10/£8****Booking essential****Adults (Under 18s to be accompanied by an adult)**

One of the most versatile and exciting vocalists to emerge in the UK in the last decade, Brigitte has performed with many jazz luminaries, including Kenny Wheeler and Bobby Wellins. Enjoy her dazzling performance of beautiful love songs from the American and Brazilian songbooks. She'll be joined by George Crowley (Sax) and John Turville (Piano).

In collaboration with

**JAZZ
STEPS**

This performance also tours to Worksop, Southwell and West Bridgford Libraries.

For details visit www.inspireculture.org.uk/jazz

*"One of the
most creative
vocalists on
the UK scene."*

BBC Radio 3

**ARTS AND HERITAGE WORKSHOP
HOME COOKED HERITAGE****Saturday 16 February, 10am – 12.30pm****£5. Concessions available****Booking essential****Adults**

Working with a performer and a visual artist, come and explore the heritage of recipes from the past unearthed in Nottinghamshire Archives, then embellish and share your favourite food stories of the present. You will get to hear about the food of Nottinghamshire's past in an entertaining and interactive presentation, before working with a visual artist to bring your own food story to life through creative fun.

The results will be shared in an exhibition in Inspire library galleries from April 2019 alongside works the artists produce with schools. Plus, all contributions will be added back into Nottinghamshire Archives for future food historians to uncover!

Nottinghamshire Archives is a fabulous resource open to the public and holding more than four million documents waiting to be discovered. Find out more at www.inspireculture.org.uk/archives

**LOTTERY FUNDED**



**HERITAGE TALK
STRUGGLE AND SUFFRAGE**

Wednesday 20 February, 2pm

£3

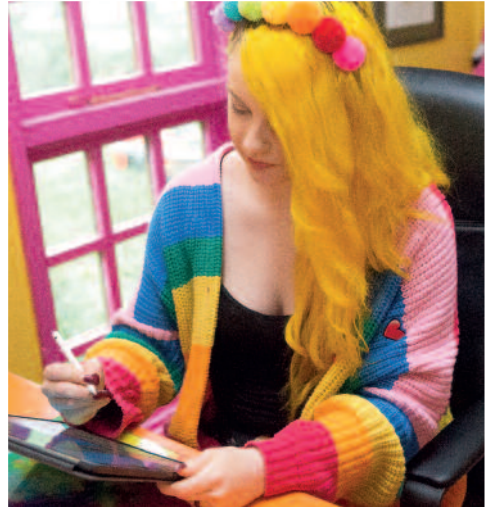
**Booking essential
Adults**

The vote, equal education, rights in the workplace and health care were some of the battles fought and won locally and nationally by women and for women. Join author Carol Lovejoy Edwards as she brings these invisible heroes to life once more and celebrates their achievements.

“Votes for Women will not be won by drawing room chatter. It has got to be fought for in the market-places, and if we don't fight for it, no-one else will.”

Nottingham suffragette
Helen Kirkpatrick Watts (pictured) 1881 – 1972

This event also takes place at West Bridgford Library on Tuesday 26 February. Visit www.inspireculture.org.uk/suffragette



**CHILDREN
DRAW-ALONG WITH KATIE ABEYS**

Friday 22 February, 2pm

£3 per child, accompanying adults free

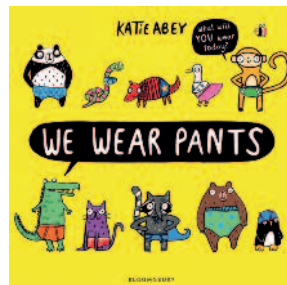
**Booking advised
Ages 4 - 8**



Katie Abeys, author and illustrator of the wild and brilliant *We Wear Pants* visits the library to share her animal stories and lead a fun draw-along. Katie has a cat called Frank and a hedgehog called Ginny, and she wants to know all about your own favourite creatures and pets!

Hear Katie read from the books then join the draw-along fun and bring your animal ideas to life.

This event also takes place at West Bridgford Library at 11am. www.inspireculture.org.uk/drawalong



SPOKEN WORD

WORD!

FEATURING ZENA EDWARDS

International Women's Day Special
(Everyone welcome!)

Friday 8 March, 7pm

£7/£5

Booking advised

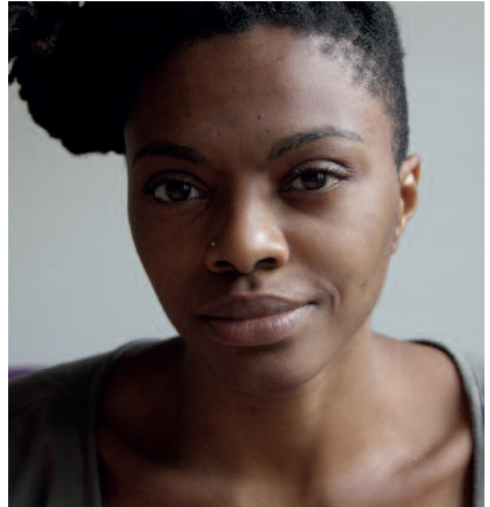
Age guidance 16+

(Under 18s to be accompanied by an adult)

WORD! – one of the longest running poetry nights in the UK - returns to Beeston Library with this International Women's Day special, featuring acclaimed poet, musician and performance artist Zena Edwards; compere Lydia Towsey and guest poets. To perform on the open mic, email in advance via hello@wordpoetry.co.uk Some spots will also be available on the night.

Zena Edwards is widely recognised as one of the most striking voices in performance poetry to come out of London and has toured extensively across the UK, US, Africa and Europe, and performed with everyone from The Last Poets to Roger McGough. Known as a powerful voice on climate change and equality, her two one-woman shows, Security (2009) and Travelling Light (2011) toured nationally and internationally to rave reviews and critical acclaim.

Find out more about Zena on her website:
<https://goodnewzee.wordpress.com>



"Edwards brings a multidisciplinary approach to the art of performance poetry...which sets her apart from her precursors." British Council

"Edwards is a superb performer."
Lyn Gardner, The Guardian



15th Annual Nottingham and Nottinghamshire Libraries'

READERS' DAY

Saturday 17 November, 2018 | County Hall, West Bridgford

An all-day event for book lovers, with an exciting line-up of speakers and sessions.

For details and ticket information visit:

www.inspireculture.org.uk/readersday
www.nottinghamcity.gov.uk/readersday



delivered by





LIVE MUSIC
JAZZ STEPS LIVE AT THE LIBRARIES PRESENTS:
YOUNG PILGRIMS
 Monday 11 March, 7.30pm
 £10/£8
Booking essential
Adults (Under 18s to be accompanied by an adult)

From Glasgow's Commonwealth Games celebrations to the Paris Jazz Festival, Young Pilgrims have entertained crowds across Europe with their rock-influenced brass band sound.

Originating in Birmingham this nine-piece band, led by charismatic Scottish trombonist Richard Foote, have performed at a range of festivals and venues including Love Supreme Festival, London Jazz Festival, Birmingham's Symphony Hall and Kings Place, with energetic and engaging performances.

"They are not only one of the finest brass bands we've seen, but one of the most energetic, vibrant and fresh artists around."

Mostly Jazz Festival

In collaboration with Jazz Steps

JAZZ STEPS

This performance also tours to Worksop, Southwell and West Bridgford Libraries.

For details visit www.inspireculture.org.uk/jazz



HERITAGE TALK
INVESTIGATING LIFE IN THE ICE AGE
 Wednesday 20 March, 2pm
 £3
Booking advised
Adults

Find out more about the exciting Ice Age Journeys project which, since 2012, has been researching the archaeology of an Ice Age site in Nottinghamshire.

Inspired by the tools left behind 14,000 years ago, and thanks to Heritage Lottery funding, the project's focus is now on the making and use of the tools, and the way the people may have dressed.

This talk highlights the range of activities open to volunteers throughout 2019.

Find out more at www.iceagejourneys.org.uk



REGULAR EVENTS

DANCE CLASS

Tuesdays, 5.30 - 7pm

£5 per session

For ages 8 - 12, see page 15

Work with a leading, professional dance company.



RATTLE, RHYME AND ROLL

Every Wednesday,

10 and 11am

Under 5s | Free

Share rhymes and songs with your little ones at our relaxed, friendly rhyme sessions for babies and toddlers.



STORY HULLABALOO

Monthly on a Saturday, 11am,

check with library for dates.

Under 5s | Free

Stories and rhymes with plenty of opportunities to join in!



PIXELHEADS WITH THE NATIONAL VIDEOGAME ARCADE



Saturdays, 12.30 – 3.30pm in the Discovery Room

£8 a session | Booking advised

Get together with other Pixelhead members to talk about, play and make videogames.

For details and booking visit www.inspireculture.org.uk/pixelheads

JOB CLUB

in partnership with Hope Nottingham

Every Tuesday, 10am - 12noon

Adults

Free

Just drop by

Come along to get guidance, help and support in your search for employment.



JOIN YOUR LIBRARY TODAY

Become a member at Beeston Library and you can:

- borrow up to 24 books for free
- borrow DVDs and audio books
- access a range of e-resources including eBooks, eMagazines and eNewspapers
- use Wi-Fi, browse the internet and use computers for free, and print or photocopy your documents

- delve into our local heritage collections and find out more about your local past

- enjoy free rhyme times with your little ones each week

- enjoy an exciting arts and cultural programme including exhibitions, learning activities, workshops, performances, community and family events

- use any library across the county

How to join

Visit any Nottinghamshire Library, or join online at www.inspireculture.org.uk/join

About Inspire

Inspire is an innovative cultural organisation launched by Nottinghamshire County Council. We are a Community Benefit Society that is dedicated to inspiring people to read, learn and enjoy culture, with the help of our services.

Join us!

It's free to join Inspire and becoming a member will allow you to help shape the way our services are managed. Visit the website to find out more. www.inspireculture.org.uk/membership

We look forward to seeing you at Beeston Library.



DISCOVER THE FACILITIES IN BEESTON LIBRARY

DISCOVERY ROOM

The Discovery Room is Beeston's space for hands-on learning, creativity and innovation. From courses in computer coding and animation for families to ICT skills for business, and from internet safety for parents to programming a microcomputer.

We also have a Code Club for children, Computers for the Terrified sessions, a Work Club offering support for job seekers and a Raspberry Pioneers group.

The Discovery Room offers a range of equipment for you to discover, whether you are new to computers, want to learn how to use a digital sewing machine or are more advanced and would like to know more about 3D scanning and printing, there is something for you. Come along to one of our taster sessions, sign up for a course or suggest other sessions you'd like us to offer!

ART ROOM

Mess in a library? Yes, it's now possible to wield a paintbrush in our fabulous Art Room at Beeston. With double Belfast sinks and wipeable floor, this dedicated creative facility will support our partner artists to deliver excellent community projects and give you the opportunity to work with them to learn new skills.

VENUE HIRE

Beeston Library is a great place to hold meetings and events. The library has four dedicated meeting rooms for hire. Presentation and refreshment-making facilities are available. Visit our website or call the library direct for more details.

Discounts are available for community groups.

GIFT SHOP

Visit our new library shop where you'll find a selection of quirky book-related gifts, fun items for young creatives and other unusual finds.

GALLERY HIRE

Are you an artist or a creative group looking to show your work to local audiences? Beeston Library's gallery offers a professional, affordable exhibition space that brings great art to local communities in the vibrant, creative and welcoming setting of libraries. Our gallery features exhibitions by amateur, semi-professional and professional artists, alongside our own programmed exhibitions throughout the year.

You can apply to hire Beeston Library gallery, for full details and application forms visit the website. Suitable for wall-based works, small installations and sculpture collections also considered.

inspireculture.org.uk/galleries

INSPIRE PICTURE ARCHIVE



Ever wanted to see what your community and the people living in it used to look like? Head on over to the Inspire Picture Archive for thousands of photographs covering over one hundred years of Nottinghamshire in photographs.

You can browse the images for free, help us to catalogue and add your own keywords and comments. If you would like to purchase one of the images for immediate download, prices start at £1.

We welcome images from you and your friends and family. If you have an old photograph, which you would like to see in the picture archive, then get in touch.

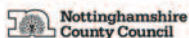
www.inspirepicturearchive.org.uk

Adventures in Music

10 magical musical adventures for you and your little one

Suitable
for children
aged 2 - 5

FREE weekly sessions start again in January
See inspireculture.org.uk/adventures for details



working with
**Nottinghamshire
Music Hub**



Supported using public funding by
**ARTS COUNCIL
ENGLAND**

EXCITING DANCE CLASSES AT BEESTON LIBRARY

Are you aged 8-12?
Come and work with
Nottingham's leading
dance company,
Next Door Dance

Tuesdays, 5.30 to 7pm
Just £5 per session.

Professional dance
leaders sharing new skills

The chance to perform
at Nottinghamshire's best
dance venues

Just bring some water
and plenty of enthusiasm!



To apply contact Next Door Dance at hello@nextdoordance.co.uk

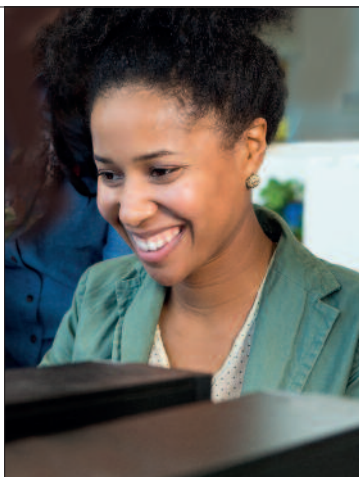
*next
door
dance*

BE INSPIRED... INSPIRE LEARNING ADULT & FAMILY COURSES AT YOUR LOCAL LIBRARY!

inspireculture.org.uk/learning
learning@inspireculture.org.uk | 01623 677200



 Education & Skills
Funding Agency



WHAT'S ON AT A GLANCE...

Date & time	Event	Type	Price	Page
Wed 7 – Thu 29 Nov	Spanish Flu: Nursing During History's Deadliest Pandemic	Exhibition	Free	4
Mon 19 Nov, 7.30pm	Jazz Steps: Mellow Baku	Live Music	£10 / £8	4
Wed 21 Nov, 2pm	Watson Fothergill: A Virtual Guided Walk	Heritage	£3	5
Sat 24 Nov, 11am	Mischief and Mystery in Moominvalley	Family Theatre	£6 / £3	5
Thu 29 Nov, 6.30pm	What They Left Behind	Poetry (reading)	Free	6
Mon 10 Dec, 7.30pm	Jazz Steps: Chris Young with the Andrew Wood Trio	Live Music	£10 / £8	7
Tue 11 Dec, 6.30 – 8.30pm	Thinking Like a Poet	Poetry (workshop)	£10	6
Fri 4 Jan – Wed 13 Feb	The Big Draw 2018: Play!	Exhibition	Free	7
Wed 16 Jan, 2pm	Exploring Local Maps	Heritage	Free	8
Fri 1 Feb, 10.30am	Story Explorers: Polar Adventures	Under 5s	Free	8
Sat 9 Feb, 1.30pm	The Impossible Adventure	Family Music Concert	£6 / £3	8
Mon 11 Feb, 7.30pm	Jazz Steps: Brigitte Beraha	Live Music	£10 / £8	9
Sat 16 Feb, 10am – 12.30pm	Home Cooked Heritage	Workshop	£5	9
Wed 20 Feb, 2pm	Struggle and Suffrage	Heritage	£3	10
Fri 22 Feb, 2pm	Draw-along with Katie Abey	Children and Families	£3	10
Fri 8 Mar, 7pm	WORD! Featuring Zena Edwards	Spoken Word	£7 / £5	11
Mon 11 Mar, 7.30pm	Jazz Steps: Young Pilgrims	Live Music	£10 / £8	12
Wed 20 Mar, 2pm	Investigating Life in the Ice Age	Heritage	£3	12

REGULAR EVENTS For details of our regular events see page 13